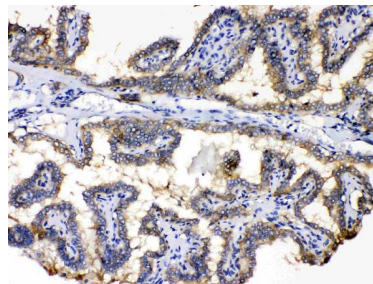


**Cat. No:** AB-84270**Size:** 100 ug**Clone:** POLY**Concentration:** 1mg/ml**Host:** Rb**Isotype:** IgG**Reactivity:** Hu, Rt**Applications:** Western blot: 1:1000  
Immunohistochemistry(Paraffin-embedded Section):1:1000-1:2000**Purification:** Aff. Pur.**Background:** cGMP-specific phosphodiesterase type 5 is an enzyme from the phosphodiesterase class. It is found in various tissues, most prominently the corpus cavernosum and the retina. It has also been recently discovered to play a vital role in the cardiovascular system. Furthermore, PDE5A also plays a role in signal transduction by regulating the intracellular concentration of cyclic nucleotides. This PDE5A gene is mapped to 4q26.**Form:** Liquid**Buffer:** Each vial contains 4mg Trehalose, 0.9mg NaCl, 0.2mg Na<sub>2</sub>HPO<sub>4</sub>, 0.05mg Na<sub>3</sub>.**Storage:** At -20°C for one year. It can also be aliquotted and stored frozen at -20°C for a longer time. Avoid repeated freezing and thawing.

Western blot analysis of PDE5A expression in rat lung extract (lane 1) and PANC-1 whole cell lysates (lane 2). PDE5A at 100KD was detected using rabbit anti- PDE5A Antigen Affinity purified polyclonal antibody at 0.5 µg/mL. The blot was developed using ECL West Pico Plus.



PDE5A was detected in paraffin-embedded sections of human thyroid cancer tissues using rabbit anti- PDE5A Antigen Affinity purified polyclonal antibody at 1 µg/mL. The immunohistochemical section was developed using SABC method

**For Research use only  
IMMUNOLOGICAL SCIENCES**