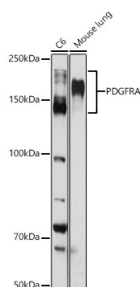
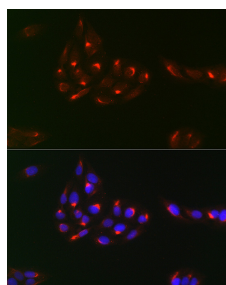


<b>Cat. No:</b>	AB-84772
<b>Conjugate:</b>	Unconjugated
<b>Size:</b>	100 ug
<b>Clone:</b>	POLY
<b>Concentration:</b>	1mg/ml
<b>Host:</b>	Rabbit
<b>Isotype:</b>	IgG
<b>Immunogen:</b>	Recombinant fusion protein containing a sequence corresponding to amino acids 896-1059 of human PDGFR alpha
<b>Reactivity:</b>	Human, Mouse, Rat
<b>Applications:</b>	Western Blot: 1:500 - 1:1000 Immunohistochemistry( paraffin embedded tissues) 1:50 - 1:200 Immunofluorescence: 1:50 - 1:200 Immunocytochemistry: 1:50 - 1:200
<b>Molecular Weight:</b>	150-190kDa
<b>Purification:</b>	Affinity purification
<b>Synonyms:</b>	CD140A; PDGFR2; PDGFR-2
<b>Background:</b>	This gene encodes a cell surface tyrosine kinase receptor for members of the platelet-derived growth factor family. These growth factors are mitogens for cells of mesenchymal origin. The identity of the growth factor bound to a receptor monomer determines whether the functional receptor is a homodimer or a heterodimer, composed of both platelet-derived growth factor receptor alpha and beta polypeptides. Studies suggest that this gene plays a role in organ development, wound healing, and tumor progression. Mutations in this gene have been associated with idiopathic hypereosinophilic syndrome, somatic and familial gastrointestinal stromal tumors, and a variety of other cancers.
<b>Form:</b>	Liquid
<b>Buffer:</b>	PBS with 0.02% sodium azide, 50% glycerol, pH 7.3.
<b>Storage:</b>	Store at -20°C. Avoid freeze / thaw cycles.

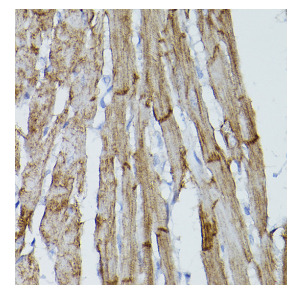


Western blot analysis of extracts of various cell lines, using PDGFR alpha antibody at 1:1000 dilution.

Secondary antibody: HRP Goat Anti-Rabbit IgG (H+L) at 1:10000 dilution.



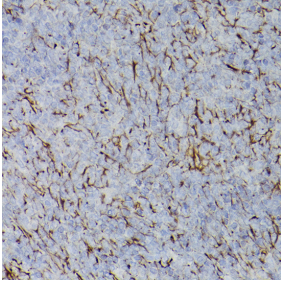
Immunofluorescence analysis of U2OS using PDGFR antibody at dilution of 1:100 (40x lens).  
Blue: DAPI for nuclear staining.



Immunohistochemistry analysis of paraffin-embedded mouse heart using PDGFR alpha Rabbit pAb at dilution of 1:50 (40x lens). Perform high pressure antigen retrieval with 10 mM citrate buffer pH 6.0 before commencing

Lysates/proteins: 25µg per lane.  
Blocking buffer: 3% nonfat dry milk in  
TBST.  
Detection: ECL West Pico Plus.  
Exposure time: 30s.

with IHC staining protocol.



Immunohistochemistry analysis of  
paraffin-embedded rat spleen using  
PDGFR alpha Rabbit pAb at dilution of  
1:50 (40x lens). Perform high pressure  
antigen retrieval with 10 mM citrate  
buffer pH 6.0 before commencing with  
IHC staining protocol.