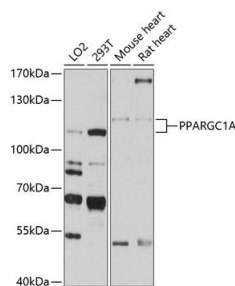
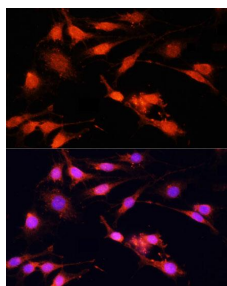


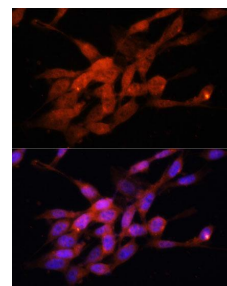
Cat. No:	AB-83882
Size:	100 ug
Clone:	POLY
Concentration:	1mg/ml
Host:	Rb
Isotype:	IgG
Immunogen:	A synthetic peptide corresponding to a sequence within amino acids 700 to the C-terminus of human PPARGC1A
Reactivity:	Hu, Ms, Rt
Applications:	Western Blot: 1:500 – 1:2000 Immunohistochemistry: 1:100 Immunofluorescence: 1: 100
Molecular Weight:	115Kda/120kDa
Purification:	Aff. Pur.
Synonyms:	PPARGC1A; LEM6; PGC-1(alpha); PGC-1alpha; PGC- 1v; PGC1; PGC1A; PPARGC1; PPARG coactivator 1 alpha
Background:	The protein encoded by this gene is a transcriptional coactivator that regulates the genes involved in energy metabolism. This protein interacts with PPARGgamma, which permits the interaction of this protein with multiple transcription factors. This protein can interact with, and regulate the activities of, cAMP response element binding protein (CREB) and nuclear respiratory factors (NRFs). It provides a direct link between external physiological stimuli and the regulation of mitochondrial biogenesis, and is a major factor that regulates muscle fiber type determination. This protein may be also involved in controlling blood pressure, regulating cellular cholesterol homoeostasis, and the development of obesity.
Form:	Liquid
Buffer:	PBS with 0.02% sodium azide, 50% glycerol, pH7.3.
Storage:	Store at -20°C. Avoid freeze / thaw cycles.



Western blot analysis of extracts of various cell lines, using PGC-1alpha antibody at 1:1000 dilution. Secondary antibody: HRP Goat Anti-Rabbit IgG (H+L) at 1:10000 dilution. Lysates/proteins: 25ug per lane.



Immunofluorescence analysis of C6 cells using PGC-1alpha antibody) at dilution of 1:100. Blue: DAPI for nuclear staining.

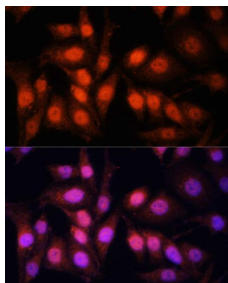


Immunofluorescence analysis of NIH/3T3 cells using PGC-1alpha antibody at dilution of 1:100. Blue: DAPI for nuclear staining.

Blocking buffer: 3% nonfat dry milk in
TBST.

Detection: ECL West Pico ECL-2001.

Exposure time: 90s.



Immunofluorescence analysis of HeLa
cells using PGC-1alpha antibody at
dilution of 1:100. Blue: DAPI for nuclear
staining.

**For Research use only
IMMUNOLOGICAL SCIENCES**