

Cat. No:	MAB-94708
Conjugate:	Unconjugated
Size:	100 ug
Clone:	236B4
Concentration:	1mg/ml
Host:	Rb
Isotype:	IgG
Immunogen:	A synthetic phosphorylated peptide around T37 & T46 of human 4E-BP1
Reactivity:	Hu, Ms, Rt
Applications:	WB 1:500 - 1:2000 IHC 1:50 - 1:200
Molecular Weight:	15kDa-20kDa
Purification:	Affinity purification
Synonyms:	4E-BP1;4EBP1;BP-1;PHAS-I;EIF4EBP1

Background:

This gene encodes one member of a family of translation repressor proteins. The protein directly interacts with eukaryotic translation initiation factor 4E, which is a limiting component of the multisubunit complex that recruits 40S ribosomal subunits to the 5' end of mRNAs. Interaction of this protein with 4E inhibits complex assembly and represses translation. This protein is phosphorylated in response to various signals including UV irradiation and insulin signaling, resulting in its dissociation from 4E and activation of mRNA translation.

Form:

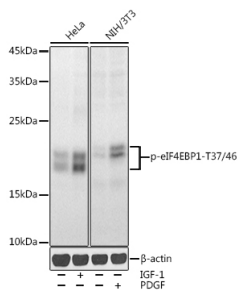
liquid

Buffer:

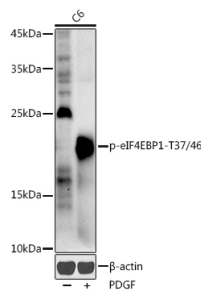
PBS with 0.02% sodium azide,50% glycerol,pH7.3.

Storage:

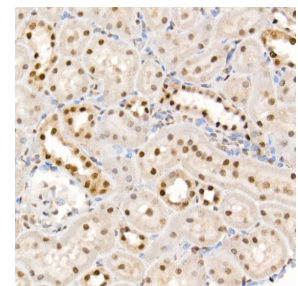
Store at -20°C. Avoid freeze / thaw cycles.



Western blot analysis of extracts of various cell lines, using Phospho-4EBP1 (T37/46) antibody at 1:1000 dilution. HeLa cells were treated by IGF-1 (50 ng/ml) at 37°C for 30 minutes after serum-starvation overnight. NIH/3T3 cells were treated by PDGF (100 ng/ml) at 37°C for 30 minutes after serum-starvation overnight. Secondary antibody: HRP Goat Anti-Rabbit IgG (H+L) at 1:10000 dilution.



Western blot analysis of extracts of C6 cells, using Phospho-4EBP1 (T37/46) antibody at 1:1000 dilution. C6 cells were treated by PDGF (100 ng/ml) at 37°C for 30 minutes after serum-starvation overnight. Secondary antibody: HRP Goat Anti-Rabbit IgG (H+L) at 1:10000 dilution. Lysates/proteins: 25ug per lane. Blocking buffer: 3% nonfat dry milk in TBST.



Immunohistochemistry of paraffinembedded rat kidney using Phospho-4EBP1 (T37/46) antibody at dilution of 1:100 (40x lens). Perform high pressure antigen retrieval with 10 mM citrate buffer pH 6.0 before commencing with IHC staining protocol.



**Product Data Sheet:
Phospho-4E-BP1 (T37/46) Rabbit Monoclonal
Antibody**

Lysates/proteins: 25ug per lane.
Blocking buffer: 3% nonfat dry milk in
TBST.

Detection: ECL Enhanced Kit
Exposure time: 30s.

Detection: ECL Enhanced Kit
Exposure time: 180s.

**For Research use only
IMMUNOLOGICAL SCIENCES**