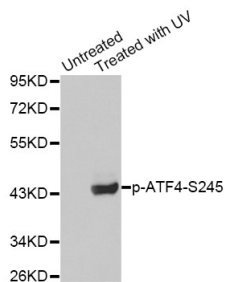


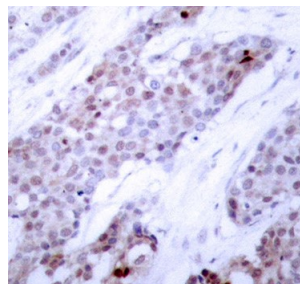
Cat. No:	ABP-0309
Conjugate:	Unconjugated
Size:	100 ug
Clone:	Poly
Concentration:	1mg/ml
Host:	Rb
Isotype:	IgG
Immunogen:	A phospho specific peptide corresponding to residues surrounding S245 of human ATF4
Reactivity:	Hu
Applications:	Western blot: 1:1000 Immunohistochemistry (paraffin-embedded tissues): 1:50-1:100
Molecular Weight:	45kDa
Purification:	Affinity purification

Background: This gene encodes a transcription factor that was originally identified as a widely expressed mammalian DNA binding protein that could bind a tax-responsive enhancer element in the LTR of HTLV-1. The encoded protein was also isolated and characterized as the cAMP-response element binding protein 2 (CREB-2). The protein encoded by this gene belongs to a family of DNA-binding proteins that includes the AP-1 family of transcription factors, cAMP-response element binding proteins (CREBs) and CREB-like proteins. These transcription factors share a leucine zipper region that is involved in protein-protein interactions, located C-terminal to a stretch of basic amino acids that functions as a DNA binding domain. Two alternative transcripts encoding the same protein have been described. Two pseudogenes are located on the X chromosome at q28 in a region containing a large inverted duplication.

Form:	liquid
Buffer:	PBS with 0.02% sodium azide, 50% glycerol, pH7.3.
Storage:	Store at -20°C. Avoid freeze / thaw cycles.



Western blot analysis of extracts from HeLa cells using Phospho-ATF4-S245 antibody.



Immunohistochemical analysis of paraffin-embedded human breast carcinoma tissue using Phospho-ATF4-S245 antibody

**For Research use only
IMMUNOLOGICAL SCIENCES**