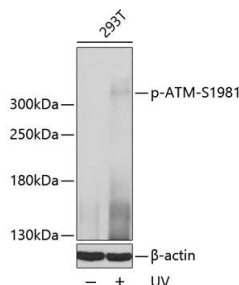


|                          |   |
|--------------------------|---|
| <b>Cat. No:</b>          | ABP-0008  |
| <b>Conjugate:</b>        | Unconjugated  |
| <b>Size:</b>             | 100 ug  |
| <b>Clone:</b>            | Poly  |
| <b>Concentration:</b>    | 1mg/ml  |
| <b>Host:</b>             | Rb  |
| <b>Isotype:</b>          | IgG   |
| <b>Immunogen:</b>        | A synthetic phosphorylated peptide around S1981 of human ATM                |
| <b>Reactivity:</b>       | Hu  |
| <b>Applications:</b>     | Western Blot: 1:500 - 1:2000 Immunofluorescence: 1:50 -1:200                |
| <b>Molecular Weight:</b> | 350kDa  |
| <b>Purification:</b>     | Affinity purification   |
| <b>Synonyms:</b>         | ATM; AT1; ATA; ATC; ATD; ATDC; ATE; TEL1; TELO 1; serine-protein kinase ATM |

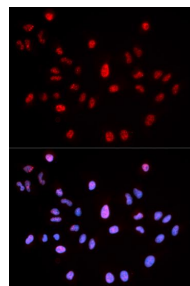
**Background:**

The protein encoded by this gene belongs to the PI3/PI4-kinase family. This protein is an important cell cycle checkpoint kinase that phosphorylates; thus, it functions as a regulator of a wide variety of downstream proteins, including tumor suppressor proteins p53 and BRCA1, checkpoint kinase CHK2, checkpoint proteins RAD17 and RAD9, and DNA repair protein NBS1. This protein and the closely related kinase ATR are thought to be master controllers of cell cycle checkpoint signaling pathways that are required for cell response to DNA damage and for genome stability. Mutations in this gene are associated with ataxia telangiectasia, an autosomal recessive disorder.

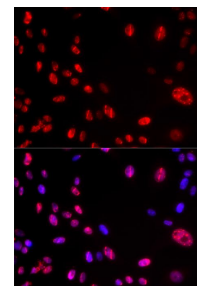
|                 |   |
|-----------------|---|
| <b>Form:</b>    | liquid  |
| <b>Buffer:</b>  | PBS with 0.02% sodium azide, 50% glycerol, pH7.3. |
| <b>Storage:</b> | Store at -20°C. Avoid freeze / thaw cycles.       |



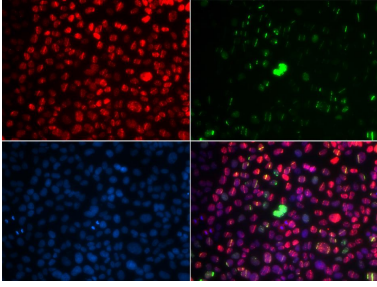
Western blot analysis of extracts of 293T cells, using Phospho-ATM-S1981 antibody at 1:2000 dilution. 293T cells were treated by UV for 15-30 minutes. Secondary antibody: HRP Goat Anti-Rabbit IgG (H+L) at 1:10000 dilution. Lysates/proteins: 25ug per lane. Blocking buffer: 3% BSA. Detection: ECL West Pico Plus Exposure time: 10s



Immunofluorescence analysis of MCF-7 cells using Phospho-ATM-S1981 antibody . Blue: DAPI for nuclear staining.



Immunofluorescence analysis of U2OS cells using Phospho-ATM-S1981 antibody Blue: DAPI for nuclear staining.



Immunofluorescence analysis of U2OS  
cells using Phospho-ATM-S1981 antibody  
Blue: DAPI for nuclear staining.

**For Research use only  
IMMUNOLOGICAL SCIENCES**