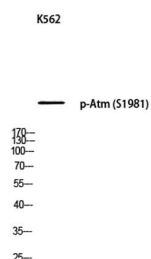
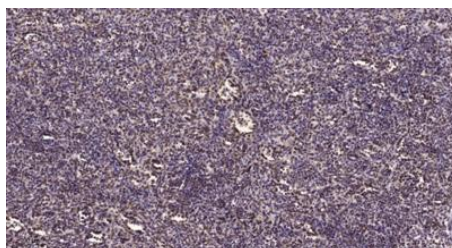


Cat. No:	ABP-0008
Conjugate:	Unconjugated
Size:	100 ug
Clone:	POLY
Concentration:	1mg/ml
Host:	Rabbit
Isotype:	IgG
Immunogen:	Synthesized phospho-peptide around the phosphorylation site of human Atm (phospho Ser1981)
Reactivity:	Human, Mouse, Rat
Applications:	Western Blot: 1/500 - 1/2000. Immunohistochemistry: 1/100 - 1/300 Immunofluorescence: 1/50-1/200 ELISA: 1/5000.
Molecular Weight:	350kD
Purification:	The antibody was affinity-purified from rabbit antiserum by affinity-chromatography using epitope-specific immunogen.
Synonyms:	ATM; Serine-protein kinase ATM; Ataxia telangiectasia mutated; A-T mutated
Background:	The protein encoded by this gene belongs to the PI3/PI4-kinase family. This protein is an important cell cycle checkpoint kinase that phosphorylates; thus, it functions as a regulator of a wide variety of downstream proteins, including tumor suppressor proteins p53 and BRCA1, checkpoint kinase CHK2, checkpoint proteins RAD17 and RAD9, and DNA repair protein NBS1. This protein and the closely related kinase ATR are thought to be master controllers of cell cycle checkpoint signaling pathways that are required for cell response to DNA damage and for genome stability. Mutations in this gene are associated with ataxia telangiectasia, an autosomal recessive disorder.
Form:	Liquid
Buffer:	Liquid in PBS containing 50% glycerol, 0.5% BSA and 0.02% sodium azide.
Storage:	Store at -20°C. Avoid repeated freeze-thaw cycles.



Western blot analysis of K562 using p-Atm (S1981) antibody. Antibody was diluted at 1:500



Immunohistochemical analysis of paraffin-embedded human spleen. 1, Tris-EDTA, pH9.0 was used for antigen retrieval. 2 Antibody was diluted at 1:200(4° overnight).3, Secondary antibody was diluted at 1:200(room

temperature, 45min).

**For Research use only
IMMUNOLOGICAL SCIENCES**