

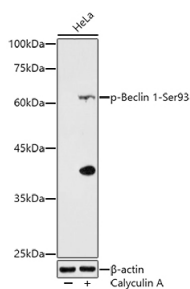


Cat. No:	MAB-94690
Conjugate:	Unconjugated
Size:	100 ug
Clone:	D9A5G
Concentration:	1mg/ml
Host:	Rb
Isotype:	IgG
Immunogen:	A synthetic phosphorylated peptide around S93 of human Beclin 1
Reactivity:	Hu
Applications:	WB 1:500 - 1:2000
Molecular Weight:	60KDa
Purification:	Affinity purification
Synonyms:	ATG6; VPS30; beclin1

Background:

This gene encodes a protein that regulates autophagy, a catabolic process of degradation induced by starvation. The encoded protein is a component of the phosphatidylinositol-3-kinase (PI3K) complex which mediates vesicle-trafficking processes. This protein is thought to play a role in multiple cellular processes, including tumorigenesis, neurodegeneration and apoptosis. Alternative splicing results in multiple transcript variants.

Form:	liquid
Buffer:	PBS with 0.05% proclin300,50% glycerol,pH7.3.
Storage:	Store at -20°C. Avoid freeze / thaw cycles.



Western blot analysis of extracts of HeLa cells, using Phospho-Beclin 1-Ser93 antibody at 1:500 dilution. HeLa cells were treated by Calyculin A (100 nM) at 37°C for 30 minutes.

Secondary antibody: HRP Goat Anti-Rabbit IgG (H+L) at 1:10000 dilution.

Lysates/proteins: 25ug per lane.

Blocking buffer: 3% nonfat dry milk in TBST.

Detection: ECL Enhanced Kit.

Exposure time: 180s.

**For Research use only
IMMUNOLOGICAL SCIENCES**