

**Cat. No:** ABP-0232  
**Conjugate:** Unconjugated  
**Size:** 100 ug  
**Clone:** POLY  
**Concentration:** 1mg/ml  
**Host:** Rabbit  
**Isotype:** IgG  
**Immunogen:** A synthetic phosphorylated peptide around S1423 of human BRCA1  
**Reactivity:** Human, Mouse, Rat

**Applications:** Western Blot: 1:500 - 1:2000  
 Immunohistochemistry(paraffin-embedded tissues): 1:50 - 1:200  
 Immunofluorescence: 1:50 - 1:200  
 Immunocytochemistry: 1:50 - 1:200

**Molecular Weight:** 270kDa

**Purification:** Affinity purification

**Synonyms:** IRIS; PSCP; BRCA1; BRCC1; FANCS; PNCA4; RNF53; BROVCA1; PPP1R53

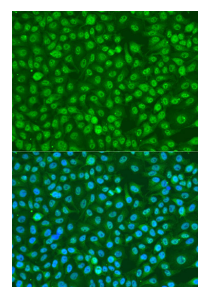
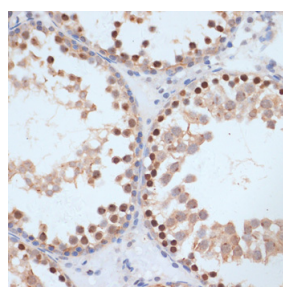
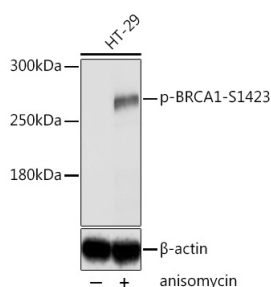
**Background:**

This gene encodes a 190 kD nuclear phosphoprotein that plays a role in maintaining genomic stability, and it also acts as a tumor suppressor. The BRCA1 gene contains 22 exons spanning about 110 kb of DNA. The encoded protein combines with other tumor suppressors, DNA damage sensors, and signal transducers to form a large multi-subunit protein complex known as the BRCA1-associated genome surveillance complex (BASC). This gene product associates with RNA polymerase II, and through the C-terminal domain, also interacts with histone deacetylase complexes. This protein thus plays a role in transcription, DNA repair of double-stranded breaks, and recombination. Mutations in this gene are responsible for approximately 40% of inherited breast cancers and more than 80% of inherited breast and ovarian cancers. Alternative splicing plays a role in modulating the subcellular localization and physiological function of this gene. Many alternatively spliced transcript variants, some of which are disease-associated mutations, have been described for this gene, but the full-length nature of only some of these variants has been described. A related pseudogene, which is also located on chromosome 17, has been identified.

**Form:** Liquid

**Buffer:** PBS with 0.02% sodium azide,50% glycerol,pH7.3.

**Storage:** Store at -20°C. Avoid freeze / thaw cycles.



**Product Data Sheet:  
Phospho-BRCA1 (Ser1423) Rabbit Polyclonal  
Antibody**

Western blot analysis of extracts of HT-29 cells, using Phospho-BRCA1-S1423 antibody at 1:2000 dilution. HT-29 cells were treated by Anisomycin (5µg/mL) for 30 minutes after serumstarvation overnight.  
Secondary antibody: HRP Goat Anti-Rabbit IgG (H+L) at 1:10000 dilution.  
Lysates/proteins: 25µg per lane.  
Blocking buffer: 3% BSA.  
Detection: ECL wEST Pico plus.  
Exposure time: 5s.

Immunohistochemistry analysis of paraffin-embedded rat testis using Phospho-BRCA1-S1423 antibody at dilution of 1:100 (40x lens). Perform microwave antigen retrieval with 10 mM Tris/EDTA buffer pH 9.0 before commencing with IHC staining protocol.

Immunofluorescence analysis of U2OS cells using Phospho-BRCA1-S1423 antibody at dilution of 1:100.  
Blue: DAPI for nuclear staining.

**For Research use only  
IMMUNOLOGICAL SCIENCES**