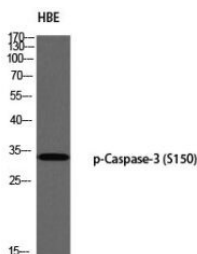


Cat. No:	ABP10164
Conjugate:	Unconjugated
Size:	100 ug
Clone:	Poly
Concentration:	1mg/ml
Host:	Rb
Isotype:	IgG
Immunogen:	Synthesized peptide derived from human Caspase-3 around the phosphorylation site of S150.
Reactivity:	Human, Mouse, Rat
Applications:	Western Blot: 1:500-1:2000 Immunohistochemistry: 1:100-1:300 ELISA: 1:40000
Molecular Weight:	34 kDA
Purification:	Liquid in PBS containing 50% glycerol, 0.5% BSA and 0.02% sodium azide.
Synonyms:	Caspase-3 CASP-3 Apopain Cysteine protease CPP32 CPP-32 Protein Yama SREBP cleavage activity 1 SCA-1 Caspase-3 subunit p17 Caspase-3 subunit P12
Background:	Involved in the activation cascade of caspases responsible for apoptosis execution. At the onset of apoptosis it proteolytically cleaves poly(ADPribose) polymerase (PARP) at a '216-Asp- -Gly-217' bond. Cleaves and activates sterol regulatory element binding proteins (SREBPs) between the basic helix-loop-helix leucine zipper domain and the membrane attachment domain. Cleaves and activates caspase-6, -7 and -9. Involved in the cleavage of huntingtin. Triggers cell adhesion in sympathetic neurons through RET cleavage.
Form:	liquid
Buffer:	Liquid in PBS containing 50% glycerol, 0.5% BSA and 0.02% sodium azide.
Storage:	Store at -20°C, and avoid repeat freeze-thaw cycles.



Western Blot (WB) analysis of HBE using
p-Caspase-3 (S150) antibody

**For Research use only
IMMUNOLOGICAL SCIENCES**