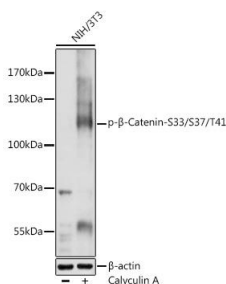


<b>Cat. No:</b>	ABP-0524
<b>Conjugate:</b>	Unconjugated
<b>Size:</b>	100 ug
<b>Clone:</b>	Poly
<b>Concentration:</b>	1mg/ml
<b>Host:</b>	Rb
<b>Isotype:</b>	IgG
<b>Immunogen:</b>	A synthetic phosphorylated peptide around S33 & T41 of human beta Catenin
<b>Reactivity:</b>	Hu, Ms, Rt
<b>Applications:</b>	Western Blot: 1:500 - 1:2000 Immunohistochemistry: 1:50 - 1:200
<b>Molecular Weight:</b>	100kDa
<b>Purification:</b>	Affinity purification
<b>Synonyms:</b>	CTNNB;MRD19;armadillo;beta Catenin;CTNNB1

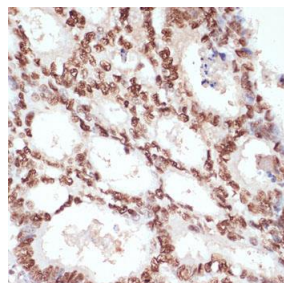
**Background:**

The protein encoded by this gene is part of a complex of proteins that constitute adherens junctions (AJs). AJs are necessary for the creation and maintenance of epithelial cell layers by regulating cell growth and adhesion between cells. The encoded protein also anchors the actin cytoskeleton and may be responsible for transmitting the contact inhibition signal that causes cells to stop dividing once the epithelial sheet is complete. Finally, this protein binds to the product of the APC gene, which is mutated in adenomatous polyposis of the colon. Mutations in this gene are a cause of colorectal cancer (CRC), pilomatixoma (PTR), medulloblastoma (MDB), and ovarian cancer. Alternative splicing results in multiple transcript variants.

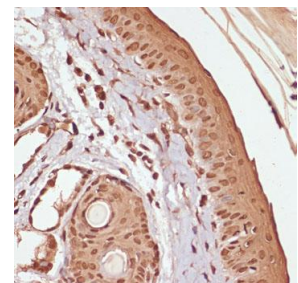
<b>Form:</b>	liquid
<b>Buffer:</b>	PBS with 0.02% sodium azide, 50% glycerol, pH7.3.
<b>Storage:</b>	Store at -20°C. Avoid freeze / thaw cycles.



Western blot analysis of extracts of NIH/3T3 cells, using Phospho- $\beta$ -Catenin-S33/S37/T41 antibody at 1:1000 dilution. NIH/3T3 cells were treated by Calyculin A (10ul) at 37°C for 30 minutes after serum-starvation overnight. Secondary antibody: HRP Goat Anti-Rabbit IgG (H+L) at 1:10000 dilution. Lysates/proteins: 25ug per lane.

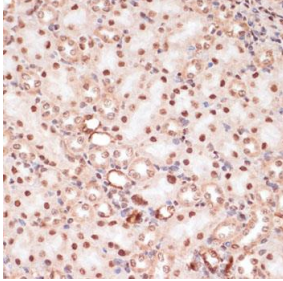


Immunohistochemistry of paraffin embedded human colon carcinoma using Phospho- $\beta$ -Catenin-S33/S37/T41 antibody at dilution of 1:100 (40x lens).



Immunohistochemistry of paraffin embedded rat skin using Phospho- $\beta$ -Catenin-S33/S37/T41 antibody at dilution of 1:100 (40x lens).

Blocking buffer: 3% nonfat dry milk in  
TBST. Detection: ECL West Pico Plus.  
Exposure time: 1s.



Immunohistochemistry of paraffin  
embedded mouse kidney using Phospho-  
 $\beta$ -Catenin-S33/S37/T41 antibody at  
dilution of 1:100 (40x lens).