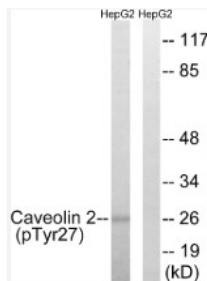


<b>Cat. No:</b>	ABP10182
<b>Conjugate:</b>	Unconjugated
<b>Size:</b>	100 ug
<b>Clone:</b>	Poly
<b>Concentration:</b>	1mg/ml
<b>Host:</b>	Rb
<b>Isotype:</b>	IgG
<b>Immunogen:</b>	Synthesized peptide derived from human Caveolin-2 around the phosphorylation site of Y27.
<b>Reactivity:</b>	Hu
<b>Applications:</b>	Western Blot: 1:500-1:2000ELISA 1:10000
<b>Molecular Weight:</b>	26kDa
<b>Purification:</b>	The antibody was affinity-purified from rabbit antiserum by affinitychromatography using epitope-specific immunogen.  May act as a scaffolding protein within caveolar membranes. Interacts directly with G-protein alpha subunits and can functionally regulate their activity. Acts as an accessory protein in conjunction with CAV1 in targeting to lipid rafts and driving caveolae formation. The Ser-36 phosphorylated form has a role in modulating mitosis in endothelial cells. Positive regulator of cellular mitogenesis of the MAPK signaling pathway. Required for the insulin stimulated nuclear translocation and activation of MAPK1 and STAT3, and the subsequent regulation of cell cycle progression .Phospho-Caveolin-2 (Y27) Polyclonal Antibody detects endogenous levels of Caveolin-2 protein only when phosphorylated at Y27.
<b>Background:</b>	
<b>Form:</b>	liquid
<b>Buffer:</b>	PBS with 0.02% sodium azide, 50% glycerol, pH7.3.
<b>Storage:</b>	Store at -20°C. Avoid freeze / thaw cycles.



Western Blot Image using ABP10182  
Phospho-Caveolin-2 (Y27) antibody

**For Research use only  
IMMUNOLOGICAL SCIENCES**