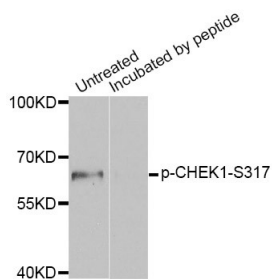
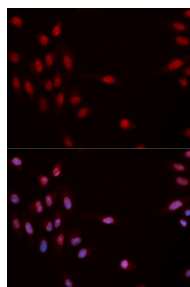


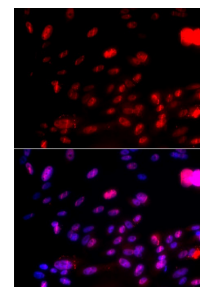
<b>Cat. No:</b>	ABP-0018
<b>Conjugate:</b>	Unconjugated
<b>Size:</b>	100 ug
<b>Clone:</b>	Poly
<b>Concentration:</b>	1mg/ml
<b>Host:</b>	Rb
<b>Isotype:</b>	IgG
<b>Immunogen:</b>	A phospho specific peptide corresponding to residues surrounding S317 of human CHEK1
<b>Reactivity:</b>	Hu,MS,RT
<b>Applications:</b>	Western Blot 1: 1000 Immunofluorescence: 1:50-1:2000
<b>Molecular Weight:</b>	54kDa
<b>Purification:</b>	Affinity purification
<b>Background:</b>	The protein encoded by this gene belongs to the Ser/Thr protein kinase family. It is required for checkpoint mediated cell cycle arrest in response to DNA damage or the presence of unreplicated DNA. This protein acts to integrate signals from ATM and ATR, two cell cycle proteins involved in DNA damage responses, that also associate with chromatin in meiotic prophase I. Phosphorylation of CDC25A protein phosphatase by this protein is required for cells to delay cell cycle progression in response to double-strand DNA breaks. Several alternatively spliced transcript variants have been found for this gene.
<b>Form:</b>	liquid
<b>Buffer:</b>	PBS with 0.02% sodium azide, 50% glycerol, pH7.3.
<b>Storage:</b>	Store at -20°C. Avoid freeze / thaw cycles.



Western blot analysis of extracts of MCF7 cell line, using Phospho-CHEK1-S317 antibody



Immunofluorescence analysis of MCF7 cell using Phospho-CHEK1-S317 antibody. Blue: DAPI for nuclear staining.



Immunofluorescence analysis of U2OS cell using Phospho-CHEK1-S317 antibody. Blue: DAPI for nuclear staining. RNF168(GFP) can be used to mark cells damaged by UV-A laser for they always gather around DNA damage region.

**For Research use only  
IMMUNOLOGICAL SCIENCES**