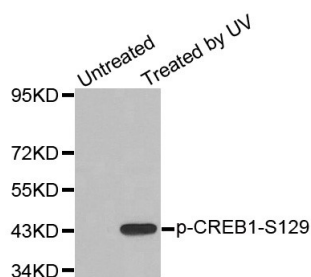


<b>Cat. No:</b>	ABP-0332
<b>Conjugate:</b>	Unconjugated
<b>Size:</b>	100 ug
<b>Clone:</b>	Poly
<b>Concentration:</b>	1mg/ml
<b>Host:</b>	Rb
<b>Isotype:</b>	IgG
<b>Immunogen:</b>	A phospho specific peptide corresponding to residues surrounding Ser129 of human CREB1.
<b>Reactivity:</b>	Hu, Ms, Rt
<b>Applications:</b>	Western Blot: 1:1000
<b>Molecular Weight:</b>	43kDa
<b>Purification:</b>	Affinity Purification
<b>Background:</b>	This gene encodes a transcription factor that is a member of the leucine zipper family of DNA binding proteins. This protein binds as a homodimer to the cAMP-responsive element, an octameric palindrome. The protein is phosphorylated by several protein kinases, and induces transcription of genes in response to hormonal stimulation of the cAMP pathway. Alternate splicing of this gene results in two transcript variants encoding different isoforms.
<b>Form:</b>	liquid
<b>Buffer:</b>	. PBS with 0.02% sodium azide, 50% glycerol, pH7
<b>Storage:</b>	Store at -20°C. Avoid freeze / thaw cycles.



Western blot analysis of extracts from 293 cells, using Phospho-CREB1-S129 antibody.

**For Research use only  
IMMUNOLOGICAL SCIENCES**