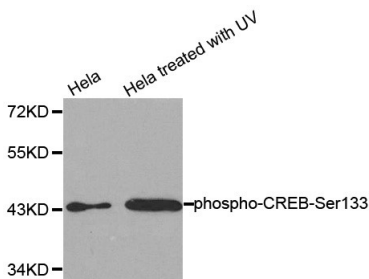


Cat. No:	ABP-0333
Conjugate:	Unconjugated
Size:	100 ug
Clone:	Poly
Concentration:	1mg/ml
Host:	Rb
Isotype:	IgG
Immunogen:	A phospho specific peptide corresponding to residues surrounding Ser133 of human CREB1.
Reactivity:	Hu, Ms, Rt
Applications:	Western Blot: 1:1000
Molecular Weight:	43kDa
Purification:	Affinity Purification
Background:	<p>CREB1 is a transcription factor that is a member of the bZIP family of DNA binding proteins. It binds as a homodimer to the CRE (cAMP-Responsive Element), an octameric palindrome containing a conserved core sequence, 5-prime-TGACG-3-prime. It consists of two transcript variants encoding respective isoforms produced by alternate splicing. It is mapped to 2q32.3-q34 . It is phosphorylated by several protein kinases and induces transcription of genes in response to hormonal stimulation of the cAMP pathway. CREB1 is crucial for the consolidation of long-term conditioned fear memories, but not for encoding, storage, or retrieval of these memories. It is required for the stability of reactivated or retrieved conditioned fear memories.</p>
Form:	liquid
Buffer:	PBS with 0.02% sodium azide, 50% glycerol, pH7.3.
Storage:	Store at -20°C. Avoid freeze / thaw cycles.



Western blot analysis of extracts from HeLa cells untreated or treated with UV, using Phospho-CREB1-S133 antibody

**For Research use only
IMMUNOLOGICAL SCIENCES**