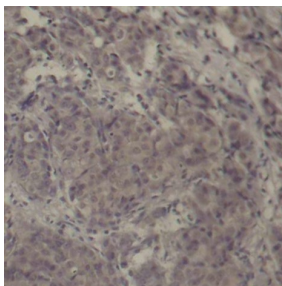


Cat. No:	ABP-0334
Conjugate:	Unconjugated
Size:	100 ug
Clone:	Poly
Concentration:	1mg/ml
Host:	Rb
Isotype:	IgG
Immunogen:	A phospho specific peptide corresponding to residues surrounding Ser142 of human CREB1.
Reactivity:	Hu, Ms, Rt
Applications:	IHC 1:50 - 1:100
Molecular Weight:	43kDa
Purification:	Affinity Purification
Background:	This gene encodes a transcription factor that is a member of the leucine zipper family of DNA binding proteins. This protein binds as a homodimer to the cAMP responsive element, an octameric palindrome. The protein is phosphorylated by several protein kinases, and induces transcription of genes in response to hormonal stimulation of the cAMP pathway. Alternate splicing of this gene results in two transcript variants encoding different isoforms.
Form:	liquid
Buffer:	PBS with 0.02% sodium azide, 50% glycerol, pH7.3.
Storage:	Store at -20°C. Avoid freeze / thaw cycles.



Immunohistochemical analysis of paraffin-embedded human breast carcinoma tissue using Phospho-CREB1-S142 antibody.

**For Research use only
IMMUNOLOGICAL SCIENCES**