



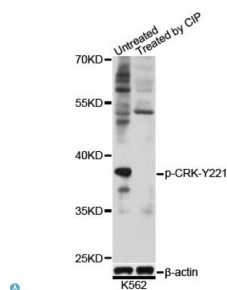
<b>Cat. No:</b>	ABP10284
<b>Conjugate:</b>	Unconjugated
<b>Size:</b>	100 ug
<b>Clone:</b>	Poly
<b>Concentration:</b>	1mg/ml
<b>Host:</b>	Rb
<b>Isotype:</b>	IgG
<b>Immunogen:</b>	A synthetic phosphorylated peptide around Y221 of human CRK.
<b>Reactivity:</b>	Hu, Ms, Rt
<b>Applications:</b>	Western Blot: 1:500-1:2000
<b>Molecular Weight:</b>	38kDa
<b>Purification:</b>	Affinity Purification
<b>Synonyms:</b>	CRK;CRKII;p38

**Background:** This gene encodes a member of an adapter protein family that binds to several tyrosine-phosphorylated proteins. The product of this gene has several SH2 and SH3 domains (src-homology domains) and is involved in several signaling pathways, recruiting cytoplasmic proteins in the vicinity of tyrosine kinase through SH2- phosphotyrosine interaction. The N-terminal SH2 domain of this protein functions as a positive regulator of transformation whereas the C-terminal SH3 domain functions as a negative regulator of transformation. Two alternative transcripts encoding different isoforms with distinct biological activity have been described

**Form:** liquid

**Buffer:** PBS with 0.02% sodium azide, 50% glycerol, pH7.3.

**Storage:** Store at -20°C. Avoid freeze / thaw cycles.



Western blot analysis of extracts of K562 cells, using Phospho-CRK-Y221 antibody at 1:1000 dilution. K562 cell lysate were treated by CIP (20ul CIP for each 400ul cell lysate) at 37°C for 1 hour .  
Secondary antibody: HRP Goat Anti-Rabbit IgG (H+L) at 1:10000 dilution.  
Lysates/proteins: 25ug per lane.  
Blocking buffer: 3% BSA. Detection: ECL West Pico Plus. Exposure time: 10s.

**For Research use only  
IMMUNOLOGICAL SCIENCES**