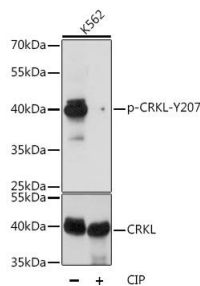
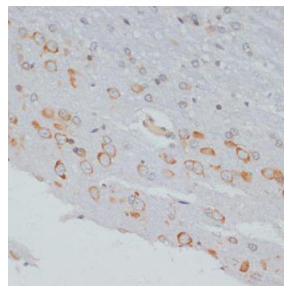


Cat. No:	ABP10285
Conjugate:	Unconjugated
Size:	100 ug
Clone:	Poly
Concentration:	1mg/ml
Host:	Rb
Isotype:	IgG
Immunogen:	A synthetic phosphorylated peptide around Y207 of human CRKL.
Reactivity:	Hu, Ms, Rt
Applications:	Western Blot: 1:500 - 1:2000 Immunohistochemistry: 1:50 - 1:100WB, IHC
Molecular Weight:	38kDa
Purification:	Affinity Purification
Background:	This gene encodes a protein kinase containing SH2 and SH3 (src homology) domains which has been shown to activate the RAS and JUN kinase signaling pathways and transform fibroblasts in a RAS-dependent fashion. It is a substrate of the BCR-ABL tyrosine kinase, plays a role in fibroblast transformation by BCR-ABL, and may be oncogenic.
Form:	liquid
Buffer:	PBS with 0.02% sodium azide, 50% glycerol, pH7.3.
Storage:	Store at -20°C. Avoid freeze / thaw cycles.



Western blot analysis of extracts of K-562 cells, using Phospho-CRKL Y207 antibody at 1:1000 dilution or CRKL antibody. K-562 cells were treated by CIP(20uL/400ul) at 37°C for 1 hour. Secondary antibody: HRP Goat Anti-Rabbit IgG (H+L) at 1:10000 dilution. Lysates/proteins: 25ug per lane. Blocking buffer: 3% BSA. Detection: ECL West Pico Plus. Exposure time: 5s.



Immunohistochemistry of paraffin embedded rat brain using Phospho-CRKL-Y207 antibody at dilution of 1:100 (40x lens).

**For Research use only
IMMUNOLOGICAL SCIENCES**