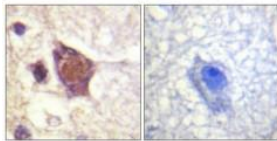
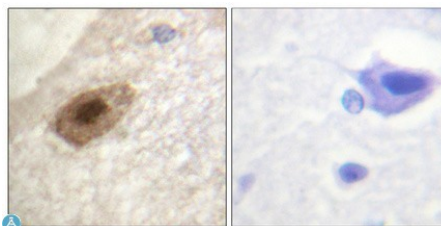


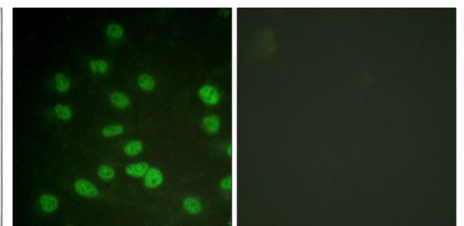
Cat. No:	ABP10322
Conjugate:	Unconjugated
Size:	100 ug
Clone:	Poly
Concentration:	1mg/ml
Host:	Rb
Isotype:	IgG
Immunogen:	Synthesized peptide derived from human DDX3 around the phosphorylation site of T322.
Reactivity:	Hu, Ms, Rt
Applications:	Immunohistochemistry: 1:100-1:300 Immunofluorescence: 1:200-1:1000 ELISA: 1:10000
Molecular Weight:	73kDa
Purification:	The antibody was affinity-purified from rabbit antiserum by affinity chromatography using epitope-specific immunogen.
Background:	Phospho-DDX3 (T322) Polyclonal Antibody detects endogenous levels of DDX3 protein only when phosphorylated at T322.
Form:	liquid
Buffer:	Liquid in PBS containing 50% glycerol, 0.5% BSA and 0.02% sodium azide.
Storage:	Store at -20°C, and avoid repeat freeze-thaw cycles



Immunohistochemical analysis of paraffin-embedded Human brain. Antibody was diluted at 1:100 (4°C, overnight). High-pressure and temperature Tris-EDTA, pH8.0 was used for antibody retrieval. Negative control (right) obtained from antibody was pre-absorbed by immunogen peptide.



Immunohistochemical analysis of paraffin-embedded Human brain. Antibody was diluted at 1:100 (4°C, overnight). High-pressure and temperature Tris-EDTA, pH8.0 was used for antibody retrieval. Negative control (right) obtained from antibody was pre-absorbed by immunogen peptide.



Immunofluorescent analysis of Phospho-DDX3 pThr322 in serum-treated HUVEC cells using a Phospho-DDX3 pThr322 polyclonal antibody.

**For Research use only
IMMUNOLOGICAL SCIENCES**