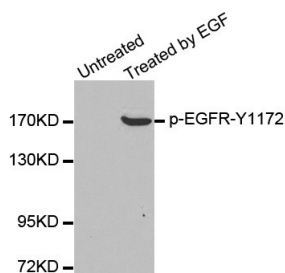


<b>Cat. No:</b>	ABP-0218
<b>Conjugate:</b>	Unconjugated
<b>Size:</b>	100 ug
<b>Clone:</b>	Poly
<b>Concentration:</b>	1mg/ml
<b>Host:</b>	Rb
<b>Isotype:</b>	IgG
<b>Immunogen:</b>	A phospho specific peptide corresponding to residues surrounding Tyr-1172 of human EGFR
<b>Reactivity:</b>	Hu, Ms, Rt
<b>Applications:</b>	WB 1000
<b>Purification:</b>	Affinity purified

**Background:**

The protein encoded by this gene is a transmembrane glycoprotein that is a member of the protein kinase superfamily. This protein is a receptor for members of the epidermal growth factor family. EGFR is a cell surface protein that binds to epidermal growth factor. Binding of the protein to a ligand induces receptor dimerization and tyrosine autophosphorylation and leads to cell proliferation. Mutations in this gene are associated with lung cancer. Multiple alternatively spliced transcript variants that encode different protein isoforms have been found for this gene.

<b>Form:</b>	liquid
<b>Buffer:</b>	PBS with 0.02% sodium azide, 50% glycerol, pH7.3.
<b>Storage:</b>	Store at -20°C. Avoid freeze / thaw cycles.



Western blot analysis of extracts from A431 cells, using Phospho-EGFR-Tyr1172 antibody

**For Research use only  
IMMUNOLOGICAL SCIENCES**