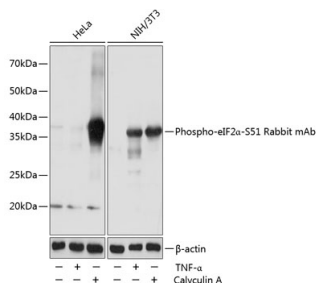


Cat. No:	MAB-94689
Conjugate:	Unconjugated
Size:	100 ug
Clone:	D9G8
Concentration:	1mg/ml
Host:	Rb
Isotype:	IgG
Immunogen:	A synthetic phosphorylated peptide around S51 of human eIF2 α
Reactivity:	Hu, Ms, Rt
Applications:	WB 1:500 - 1:2000
Molecular Weight:	38 kDa
Purification:	Affinity purification
Synonyms:	EIF-2;EIF-2A;EIF-2alpha;EIF2;EIF2A;EIF2S1

Background:

The translation initiation factor EIF2 catalyzes the first regulated step of protein synthesis initiation, promoting the binding of the initiator tRNA to 40S ribosomal subunits. Binding occurs as a ternary complex of methionyl-tRNA, EIF2, and GTP. EIF2 is composed of 3 nonidentical subunits, the 36-kD EIF2-alpha subunit (EIF2S1), the 38-kD EIF2-beta subunit (EIF2S2; MIM 603908), and the 52-kD EIF2-gamma subunit (EIF2S3; MIM 300161). The rate of formation of the ternary complex is modulated by the phosphorylation state of EIF2-alpha (Ernst et al., 1987 [PubMed 2948954]).[supplied by OMIM, Feb 2010]

Form:	liquid
Buffer:	PBS with 0.02% sodium azide,0.05% BSA,50% glycerol,pH7.3
Storage:	Store at -20°C. Avoid freeze / thaw cycles.



Western blot analysis of extracts of various cell lines, using Phospho-eIF2 α -S51 Rabbit MAb at 1:1000 dilution. HeLa and NIH/3T3 cells were treated by Calyculin A (100 nM) at 37°C for 30 minutes after serum-starvation overnight or treated by TNF- α (20 ng/mL) at 37°C for 30 minutes. Secondary antibody: HRP Goat Anti-Rabbit IgG (H+L) at 1:10000 dilution. Lysates/proteins: 25ug per lane.

Blocking buffer: 3% nonfat dry milk in
TBST.

Detection: ECL Basic Kit.
Exposure time: 1s.

**For Research use only
IMMUNOLOGICAL SCIENCES**