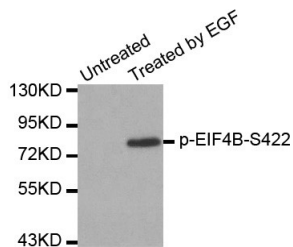
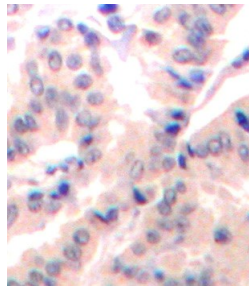


| | |
|--------------------------|---|
| Cat. No: | ABP-0278 |
| Conjugate: | Unconjugated |
| Size: | 100 ug |
| Clone: | Poly |
| Concentration: | 1mg/ml |
| Host: | Rb |
| Isotype: | IgG |
| Immunogen: | A phospho specific peptide corresponding to residues surrounding S422 of human EIF4B. |
| Reactivity: | Hu, Ms |
| Applications: | Western Blot: 1:1000 Immunohistochemistry (paraffin-embedded tissues): 1:50-1: |
| Molecular Weight: | 80kDa |
| Purification: | Affinity purification |
| Form: | liquid |
| Buffer: | PBS with 0.02% sodium azide, 50% glycerol, pH7.3 |
| Storage: | Store at -20°C. Avoid freeze / thaw cycles. |



Western blot analysis of extracts from HeLa cells using phospho-EIF4B-S422 antibody.



Immunohistochemical analysis of paraffin-embedded human lung carcinoma tissue using phospho-EIF4B-S422 antibody.

**For Research use only
IMMUNOLOGICAL SCIENCES**