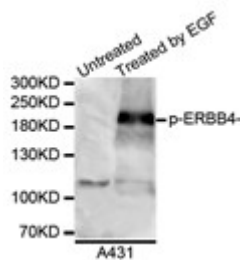


Cat. No:	MAB-94211
Conjugate:	Unconjugated
Size:	100 ug
Clone:	21A9
Concentration:	1mg/ml
Host:	Rb
Isotype:	IgG
Reactivity:	Hu, Ms, Rt
Applications:	WB 1:1000
Molecular Weight:	180 kDa

Purification: Monoclonal antibody is produced by immunizing animals with a synthetic phosphopeptide corresponding to residues surrounding Tyr1284 of human HER4/ErbB4

Background: The HER/ErbB receptor tyrosine kinase family has been implicated in normal development, cardiac function and cancer (1,2). HER4/ErbB4, like other family members, has four ectodomains, a single transmembrane domain and a cytoplasmic tail containing the active tyrosine kinase domain (3). By binding to neuregulins and/or EGF family ligands, ErbB4 forms either a homodimer or heterodimer with other ErbB family members, which results in receptor activation and signaling (3). ErbB4 is ubiquitously expressed with the highest expression occurring in brain and heart. The expression of ErbB4 in breast cancer, pediatric brain cancer and other types of carcinomas has been reported suggesting that ErbB4 expression is involved in both normal tissue development and carcinogenesis (3). Phospho-HER4/ErbB4 (Tyr1284) (21A9) Rabbit mAb detects endogenous levels of HER4/ ErbB4 protein only when phosphorylated on Tyr1284. This antibody does not cross-react with other ErbB family members.

Form:	liquid
Buffer:	PBS with 0.02% sodium azide, 50% glycerol, pH7.3.
Storage:	Store at -20°C. Avoid freeze / thaw cycles



Western blot analysis of extracts from A431 cells using Phospho-ErbB4 (Tyr1284) Monoclonal Antibody

References

(1) Holbro, T. and Hynes, N.E. (2004) *Annu. Rev. Pharmacol. Toxicol.* 44, 195-217. (2) Roskoski Jr, R. (2004) *Biochem. Biophys. Res. Commun.* 319, 1-11. (3) Carpenter, G. (2003) *Exp. Cell Res.* 284, 66-77.

**For Research use only
IMMUNOLOGICAL SCIENCES**