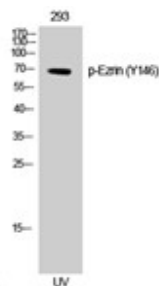


Cat. No:	ABP-10002
Conjugate:	Unconjugated
Size:	100 ug
Clone:	Poly
Concentration:	1mg/ml
Host:	Rb
Isotype:	IgG
Immunogen:	Synthesized peptide derived from human Ezrin around the phosphorylation site of Y146.
Reactivity:	Hu, Ms, Rt
Applications:	Western Blot 1:1,000 ELISA: 1:20,000
Molecular Weight:	69 kDa
Purification:	The antibody was affinity-purified from rabbit antiserum by affinity-chromatography using epitope-specific immunogen. Probably involved in connections of major cytoskeletal structures to the plasma membrane. In epithelial cells, required for the formation of microvilli and membrane ruffles on the apical pole. Along with PLEKHG6, required for normal macropinocytosis.: Phospho-Ezrin (Y146) Polyclonal Antibody detects endogenous levels of Ezrin protein only when phosphorylated at Y146.
Background:	
Form:	liquid
Buffer:	Liquid in PBS containing 50% glycerol, 0.5% BSA and 0.02% sodium azide.
Storage:	Store at -20°C, and avoid repeat freeze-thaw cycles.



Western Blot (WB) analysis of 293 cells using Phospho-Ezrin (Y146) Polyclonal Antibody.

**For Research use only
IMMUNOLOGICAL SCIENCES**