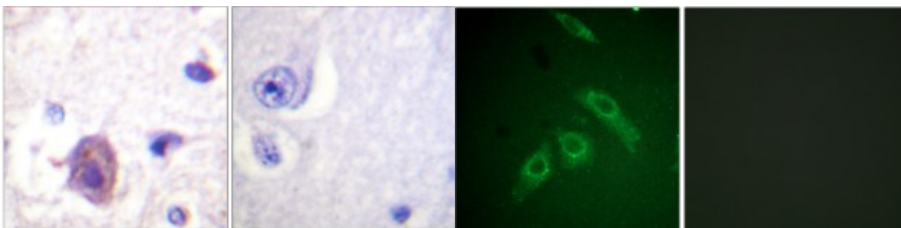


<b>Cat. No:</b>	ABP10413
<b>Conjugate:</b>	Unconjugated
<b>Size:</b>	100 ug
<b>Clone:</b>	Poly
<b>Concentration:</b>	1mg/ml
<b>Host:</b>	Rb
<b>Isotype:</b>	IgG
<b>Immunogen:</b>	Synthesized peptide derived from human FAK around the phosphorylation site of S910.
<b>Reactivity:</b>	Hu, Ms, Rt
<b>Applications:</b>	Immunohistochemistry: 1:100-1:300 Immunofluorescence: 1:200-1:1000 ELISA: 1:5000
<b>Molecular Weight:</b>	125 kDa
<b>Purification:</b>	The antibody was affinity-purified from rabbit antiserum by affinity chromatography using epitope-specific immunogen
<b>Background:</b>	Phospho-FAK (S910) Polyclonal Antibody detects endogenous levels of FAK protein only when phosphorylated at S910. Tissue Specificity: Detected in B and T-lymphocytes. Isoform 1 and isoform 6 are detected in lung fibroblasts (at protein level). Ubiquitous.
<b>Form:</b>	liquid
<b>Buffer:</b>	Liquid in PBS containing 50% glycerol, 0.5% BSA and 0.02% sodium azide.
<b>Storage:</b>	Store at -20°C, and avoid repeat freeze-thaw cycles.



Immunohistochemistry - paraffin-embedded human brain. The picture on the right is blocked with the phospho peptide.

Immunofluorescence - analysis of HepG2 cells. The picture on the right is blocked with the phospho peptide.

**For Research use only  
IMMUNOLOGICAL SCIENCES**