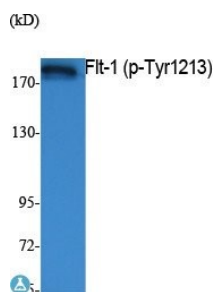


Cat. No:	ABP10439
Conjugate:	Unconjugated
Size:	100 ug
Clone:	Poly
Concentration:	1mg/ml
Host:	Rb
Isotype:	IgG
Immunogen:	Synthesized peptide derived from human Flt-1 around the phosphorylation site of Y1213.
Reactivity:	Hu, Ms, Rt
Applications:	Western Blot: 1:500-1:2000 ELISA: 1:40000
Molecular Weight:	180 kDa
Purification:	The antibody was affinity-purified from rabbit antiserum by affinity chromatography using epitope-specific immunogen.
Synonyms:	Vascular endothelial growth factor receptor 1 VEGFR-1 Fms-like tyrosine kinase 1 FLT-1 Tyrosine-protein kinase receptor FLT FLT Vascular permeability factor receptor
Background:	Phospho-Flt-1 (Y1213) Polyclonal Antibody detects endogenous levels of Flt-1 protein only when phosphorylated at Y1213. Tissue Specificity: Detected in normal lung, but also in placenta, liver, kidney, heart and brain tissues. Specifically expressed in most of the vascular endothelial cells, and also expressed in peripheral blood monocytes. Isoform 2 is strongly expressed in placenta. Isoform 3 is expressed in corneal epithelial cells (at protein level). Isoform 3 is expressed in vascular smooth muscle cells (VSMC).
Form:	liquid
Buffer:	Liquid in PBS containing 50% glycerol, 0.5% BSA and 0.02% sodium azide.
Storage:	Store at -20°C, and avoid repeat freeze-thaw cycles



Western Blot (WB) analysis of extracts from K562 cells, using Phospho-Flt-1 (Y1213) polyclonal antibody.

**For Research use only
IMMUNOLOGICAL SCIENCES**