

<b>Cat. No:</b>	MAB-11645
<b>Conjugate:</b>	Unconjugated
<b>Size:</b>	100 ug
<b>Clone:</b>	D17D2
<b>Concentration:</b>	1mg/ml
<b>Host:</b>	Rb
<b>Isotype:</b>	IgG
<b>Immunogen:</b>	Recombinant protein of human GSK-3 $\alpha$ / $\beta$ .
<b>Reactivity:</b>	Hu, Ms, Rt
<b>Applications:</b>	WB 1:10000 - 1:23000 IP 1:50 - 1:200
<b>Molecular Weight:</b>	51/46kDa
<b>Purification:</b>	Affinity purification
<b>Synonyms:</b>	GSK3B;gsk-3 $\beta$

The protein encoded by this gene is a serine-threonine kinase, belonging to the glycogen synthase kinase subfamily. It is involved in energy metabolism, neuronal cell

**Background:**

development, and body pattern formation. Polymorphisms in this gene have been implicated in modifying risk of Parkinson disease, and studies in mice show that overexpression of this gene may be relevant to the pathogenesis of Alzheimer disease. Alternatively spliced transcript variants encoding different isoforms have been found for this gene.

**Form:**

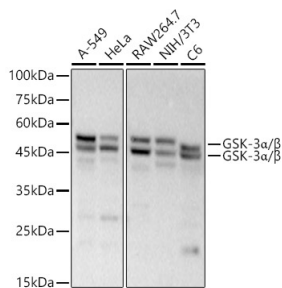
liquid

**Buffer:**

PBS with 0.05% proclin300,0.05% BSA,50% glycerol,pH7.3.

**Storage:**

Store at -20°C. Avoid freeze / thaw cycles.



Western blot analysis of various lysates, using GSK-3 $\alpha$ / $\beta$  antibody at 1:23000 dilution.

Secondary antibody: HRP Goat Anti-Rabbit IgG (H+L) at 1:10000 dilution.

Lysates/proteins: 25ug per lane.

Blocking buffer: 3% nonfat dry milk in TBST.

Detection: ECL Basic Kit.

Exposure time: 90s.



**Product Data Sheet:  
Phospho-GSK3 $\alpha$ / $\beta$  (S21/9) Rabbit Monoclonal  
Antibody**

**For Research use only  
IMMUNOLOGICAL SCIENCES**