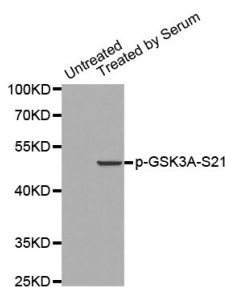
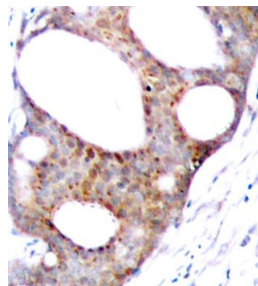


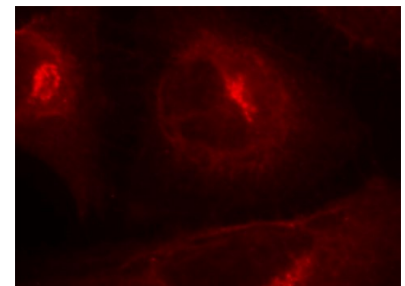
Cat. No:	ABP-0120
Conjugate:	Unconjugated
Size:	100 ug
Clone:	Poly
Concentration:	1mg/ml
Host:	Rb
Isotype:	IgG
Immunogen:	A phospho specific peptide corresponding to residues surrounding S21 of human GSK3A.
Reactivity:	Hu, Ms, Rt
Applications:	Western Blot: 1:1000 Immunohistochemistry: 1:50-1:100 Immunofluorescence: 1:100-1:200
Molecular Weight:	51kDa
Purification:	Affinity purification
Background:	This gene encodes a multifunctional Ser/Thr protein kinase that is implicated in the control of several regulatory proteins including glycogen synthase, and transcription factors, such as JUN. It also plays a role in the WNT and PI3K signaling pathways, as well as regulates the production of beta-amyloid peptides associated with Alzheimer's disease.
Form:	liquid
Buffer:	PBS with 0.02% sodium azide, 50% glycerol, pH7.3.
Storage:	Store at -20°C. Avoid freeze / thaw cycles.



Western blot analysis of extracts from 293 cells using Phospho-GSK3A-Ser21 antibody.



Immunohistochemical analysis of paraffin-embedded human breast carcinoma tissue using Phospho-GSK3A-Ser21 antibody.



Immunofluorescence staining of methanol-fixed HeLa cells showing cytoplasmic staining using Phospho-GSK3A-Ser21 antibody.

**For Research use only
IMMUNOLOGICAL SCIENCES**