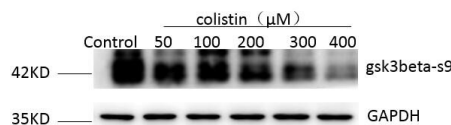
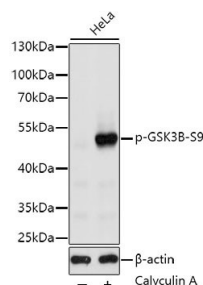


Cat. No:	ABP-0358
Conjugate:	Unconjugated
Size:	100 ug
Clone:	Poly
Concentration:	1mg/ml
Host:	Rb
Isotype:	IgG
Immunogen:	A synthetic phosphorylated peptide around S9 of human GSK3B.
Reactivity:	Hu, Ms, Rt
Applications:	Western Blot: 1:1000 Immunohistochemistry (paraffin-embedded tissues): 1:50-1:100
Molecular Weight:	47kDa
Purification:	The antibody was affinity-purified from rabbit antiserum by affinity chromatography using epitope-specific immunogen.
Synonyms:	GSK3B; glycogen synthase kinase-3 beta
Background:	The protein encoded by this gene is a serine-threonine kinase, belonging to the glycogen synthase kinase subfamily. It is involved in energy metabolism, neuronal cell development, and body pattern formation. Polymorphisms in this gene have been implicated in modifying risk of Parkinson disease, and studies in mice show that overexpression of this gene may be relevant to the pathogenesis of Alzheimer disease. Alternatively spliced transcript variants encoding different isoforms have been found for this gene.
Form:	liquid
Buffer:	PBS with 0.02% sodium azide, 50% glycerol, pH7.3.
Storage:	Store at -20°C. Avoid freeze / thaw cycles.



Western blot (WB) Sample: Mouse N2a
 ,Mouse kidney Loading :15ug
 Dilution:1:1000 Incubation :over night
 Temperature:4 °C Exposure:30s

Western blot analysis of extracts of HeLa cells, using Phospho-GSK3B-S9 antibody at 1:1000 dilution. HeLa cells were treated by Calyculin A (100nM) for 30 minutes after serum-starvation overnight. Secondary antibody: HRP Goat Anti-Rabbit IgG (H+L) at 1:10000 dilution. Lysates/proteins: 25ug per lane. Blocking buffer: 3% BSA. Detection: ECL West Pico Kit Exposure time: 1s.

**For Research use only
IMMUNOLOGICAL SCIENCES**