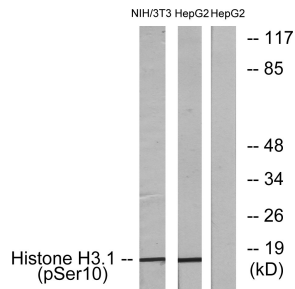
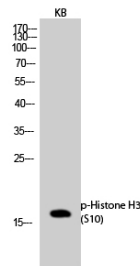


Cat. No:	ABP-0639
Conjugate:	Unconjugated
Size:	100 ug
Clone:	POLY
Concentration:	1mg/ml
Host:	Rabbit
Isotype:	IgG
Immunogen:	The antiserum was produced against synthesized peptide derived from human Histone H3.1 around the phosphorylation site of Ser10. AA range:1-50
Reactivity:	Human;Mouse;Rat;Drosophila melanogaster Western Blot: 1/500 - 1/2000 Immunohistochemistry: 1/100 - 1/300
Applications:	Immunocytochemistry: 1/200 - 1/1000 Immunofluorescence: 1/200 - 1/1000 ELISA: 1/10000. IHC-f,Flow Cyt 1:500
Molecular Weight:	17kDa
Purification:	The antibody was affinity-purified from rabbit antiserum by affinity-chromatography using epitope-specific immunogen.
Synonyms:	HIST1H3A; H3FA; HIST1H3B; H3FL; HIST1H3C; H3FC; HIST1H3D; H3FB; HIST1H3E; H3FD; HIST1H3F; H3FI; HIST1H3G; H3FH; HIST1H3H; H3FK; HIST1H3I; H3FF; HIST1H3J; H3FJ; Histone H3.1; Histone H3/a; Histone H3/b; Histone H3/c; Histone H3/d; Histone H3
Background:	Histones are basic nuclear proteins that are responsible for the nucleosome structure of the chromosomal fiber in eukaryotes. This structure consists of approximately 146 bp of DNA wrapped around a nucleosome, an octamer composed of pairs of each of the four core histones (H2A, H2B, H3, and H4). The chromatin fiber is further compacted through the interaction of a linker histone, H1, with the DNA between the nucleosomes to form higher order chromatin structures. This gene is intronless and encodes a replication-dependent histone that is a member of the histone H3 family. Transcripts from this gene lack polyA tails; instead, they contain a palindromic termination element. This gene is found in the large histone gene cluster on chromosome 6p22-p21.3.
Form:	Liquid
Buffer:	Liquid in PBS containing 50% glycerol, 0.5% BSA and 0.02% sodium azide.
Storage:	Store at -20°C. Avoid repeated freeze-thaw cycles.

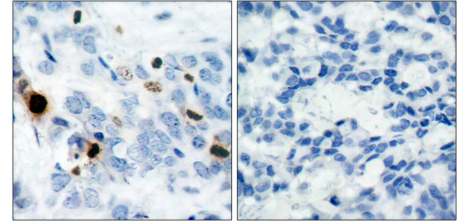
**Product Data Sheet:
Phospho Histone H3 (Ser10) Rabbit Polyclonal
Antibody**



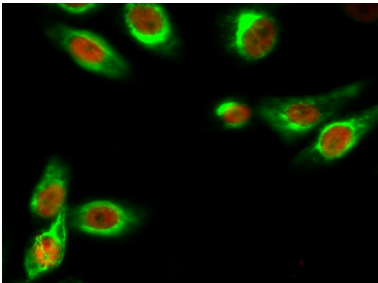
Western blot analysis of lysates from NIH/3T3 cells and HepG2 cells, using Histone H3.1 (Phospho-Ser10) Antibody. The lane on the right is blocked with the phospho peptide.



Western Blot analysis of KB cells using Phospho-Histone H3 (S10) Polyclonal Antibody cells nucleus extracted by Minute TM Cytoplasmic and Nuclear Fractionation kit.



Immunohistochemistry analysis of paraffin-embedded human breast carcinoma, using Histone H3.1 (Phospho-Ser10) Antibody. The picture on the right is blocked with the phospho peptide.



Immunofluorescence analysis of Hela cell. 1, Histone H3 (phospho Ser10) Polyclonal Antibody (red) was diluted at 1:200 (4° overnight). β -Tubulin Monoclonal Antibody (5G3) (green) was diluted at 1:200 (4° overnight). 2, Goat Anti Rabbit Alexa Fluor 594 was diluted at 1:1000 (room temperature, 50min). Goat Anti Mouse Alexa Fluor 488 was diluted at 1:1000 (room temperature, 50min).

**For Research use only
IMMUNOLOGICAL SCIENCES**