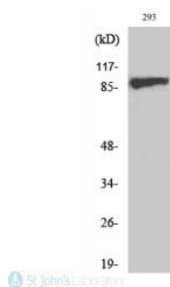
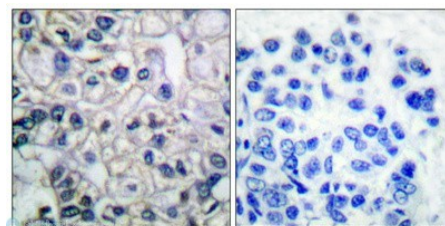


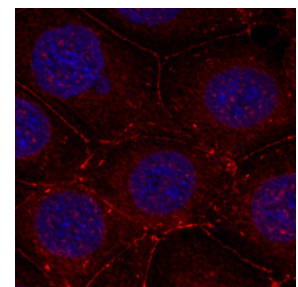
<b>Cat. No:</b>	ABP-0367
<b>Conjugate:</b>	Unconjugated
<b>Size:</b>	100 ug
<b>Clone:</b>	Poly
<b>Concentration:</b>	1mg/ml
<b>Host:</b>	Rb
<b>Isotype:</b>	IgG
<b>Immunogen:</b>	Synthesized peptide derived from human IGF-IR around the phosphorylation site of Y1161. Immunogen Region: 1100-1180 aa
<b>Reactivity:</b>	Hu, Ms, Rt
<b>Applications:</b>	Western Blot: 1:1000 Immunohistochemistry: 1:100-1:300 Immunofluorescence: 1:200-1:1000 ELISA: 1:40000
<b>Molecular Weight:</b>	95 kDa
<b>Purification:</b>	The antibody was affinity-purified from rabbit antiserum by affinity chromatography using epitope-specific immunogen.
<b>Background:</b>	Found as a hybrid receptor with INSR in muscle, heart, kidney, adipose tissue, skeletal muscle, hepatoma, fibroblasts, spleen and placenta (at protein level). Expressed in a variety of tissues. Overexpressed in tumors, including melanomas, cancers of the colon, pancreas prostate and kidney. Specificity: Phospho-IGF-IR (Y1161) Polyclonal Antibody detects endogenous levels of IGF-IR protein only when phosphorylated at Y1161.
<b>Form:</b>	liquid
<b>Buffer:</b>	Liquid in PBS containing 50% glycerol, 0.5% BSA and 0.02% sodium azide.
<b>Storage:</b>	Store at -20°C, and avoid repeat freeze-thaw cycles.



Western Blot (WB) analysis of specific cells using Phospho-IGF-IR (Y1161) Polyclonal Antibody.



Immunohistochemical analysis of paraffin-embedded Human breast cancer. Antibody was diluted at 1:100 (4° overnight). High-pressure and temperature Tris-EDTA, pH 8.0 was used for antibody retrieval. Negative control (right) obtained from antibody was pre-absorbed.



Immunofluorescence staining - Phospho-IGF1R-Y1161 antibody

**For Research use only  
IMMUNOLOGICAL SCIENCES**