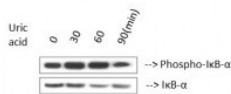


Cat. No:	ABP-9031
Conjugate:	Unconjugated
Size:	100 ul
Clone:	Poly
Concentration:	1mg/ml
Host:	Rb
Isotype:	IgG
Immunogen:	Synthesized peptide derived from human IκB-α around the phosphorylation site of S32/S36.
Reactivity:	Hu, Ms, Rt, Mk
Applications:	Western Blot: 1:1000 Immunohistochemistry: 1:100-1:300 Immunofluorescence: 1:200-1:1000 Elisa: 1:10000
Molecular Weight:	36 kDa
Purification:	The antibody was affinity-purified from rabbit antiserum by affinity-chromatography using epitope-specific immunogen.
Background:	Anti-Phospho-IκB-α (S32/S36) Polyclonal Antibody detects endogenous levels of IκB-α protein only when phosphorylated at S32/S36
Form:	liquid
Buffer:	Liquid in PBS containing 50% glycerol, 0.5% BSA and 0.02% sodium azide.
Storage:	Store at -20°C, and avoid repeat freeze-thaw cycles.



Western Blot (WB) analysis of Uric acid treated COS7 cells using IκappaB-alpha (phospho Ser32/S36) Polyclonal Antibody. (ST190311)

**For Research use only
IMMUNOLOGICAL SCIENCES**