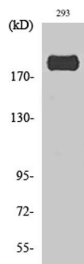
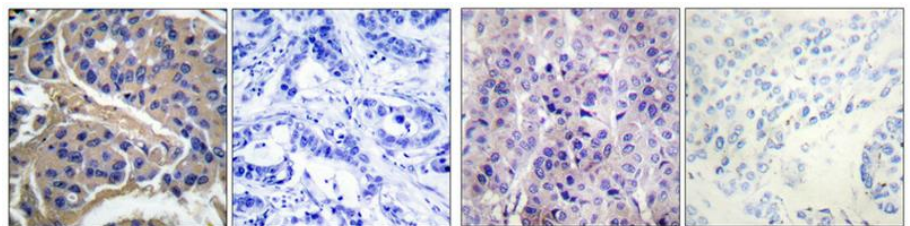


Cat. No:	ABP-0431
Conjugate:	Unconjugated
Size:	100 ug
Clone:	Poly
Concentration:	1mg/ml
Host:	Rb
Isotype:	IgG
Immunogen:	Synthesized Phospho Peptide around the Phosphorylation site of human IRS_1(phospho Ser307)
Reactivity:	Hu, Ms, Rt,Mk
Applications:	WB: 1:500 - 1:1000, IHC-p 1:100- 1:200
Molecular Weight:	170kd
Purification:	affinity purified
Synonyms:	IRS1; Insulin receptor substrate 1; IRS-1
Background:	This gene encodes a protein which is phosphorylated by insulin receptor tyrosine kinase. Mutations in this gene are associated with type II diabetes and susceptibility to insulin resistance.
Form:	liquid
Buffer:	PBS containing 50% glycerol, 0.5% BSA and 0.02% sodium azide
Storage:	Store at -20°C. Avoid repeated freeze-thaw cycles.



Western Blot analysis of 293 cells using Phospho-IRS-1(S307) Polyclonal Antibody diluted at 1:1000



Immunohistochemical analysis of paraffin-embedded Human breast cancer. Antibody was diluted at 1:100(4° overnight).

High-pressure and temperature Tris-EDTA, pH8.0 was used for antigen retrieval. Negative control (right) obtained from antibody was pre-absorbed by immunogen peptide.

Immunohistochemical analysis of paraffin-embedded Human breast cancer. Antibody was diluted at 1:100(4° overnight).

High-pressure and temperature Tris-EDTA, pH8.0 was used for antigen retrieval. Negative Control (right) obtained from antibody was pre-absorbed by immunogen peptide.

**For Research use only
IMMUNOLOGICAL SCIENCES**