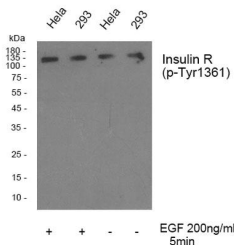
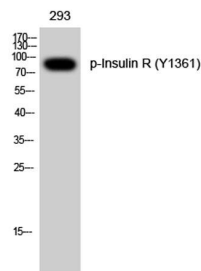


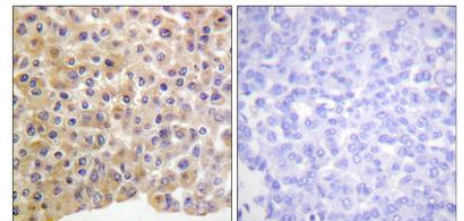
<b>Cat. No:</b>	ABP-0042
<b>Conjugate:</b>	Unconjugated
<b>Size:</b>	100 ug
<b>Clone:</b>	POLY
<b>Concentration:</b>	1mg/ml
<b>Host:</b>	Rb
<b>Isotype:</b>	IgG
<b>Immunogen:</b>	The antiserum was produced against synthesized peptide derived from human IR around the phosphorylation site of Tyr1361. AA range:1331-1380
<b>Reactivity:</b>	Human;Mouse;Rat
<b>Applications:</b>	Western Blot: 1/500 - 1/2000. Immunohistochemistry: 1/100 - 1/300
<b>Molecular Weight:</b>	95kDa
<b>Purification:</b>	The antibody was affinity-purified from rabbit antiserum by affinity-chromatography using epitope-specific immunogen.
<b>Synonyms:</b>	INSR; Insulin receptor; IR; CD antigen CD220
<b>Background:</b>	This gene encodes a member of the receptor tyrosine kinase family of proteins. The encoded preproprotein is proteolytically processed to generate alpha and beta subunits that form a heterotetrameric receptor. Binding of insulin or other ligands to this receptor activates the insulin signaling pathway, which regulates glucose uptake and release, as well as the synthesis and storage of carbohydrates, lipids and protein. Mutations in this gene underlie the inherited severe insulin resistance syndromes including type A insulin resistance syndrome, Donohue syndrome and Rabson-Mendenhall syndrome. Alternative splicing results in multiple transcript variants.
<b>Form:</b>	liquid
<b>Buffer:</b>	Liquid in PBS containing 50% glycerol, 0.5% BSA and 0.02% sodium azide.
<b>Storage:</b>	Store at -20°C. Avoid repeated freeze-thaw cycles.



Western blot analysis of Insulin R (phospho Tyr1361) Polyclonal Antibody, using hela,293 cell treated or untreated with EGF 200ng/ml 30', 4° over night, secondary antibody was diluted at 1:10000, 37° 1hour.



Western Blot analysis of 293 cells using Phospho-Insulin R (Y1361) Polyclonal Antibody.



Immunohistochemistry analysis of paraffin-embedded human breast carcinoma, using IR (Phospho-Tyr1361) Antibody. The picture on the right is blocked with the phospho peptide.



**Product Data Sheet:  
Phospho-Insulin R (Y1361) Rabbit Polyclonal  
Antibody**

**For Research use only  
IMMUNOLOGICAL SCIENCES**