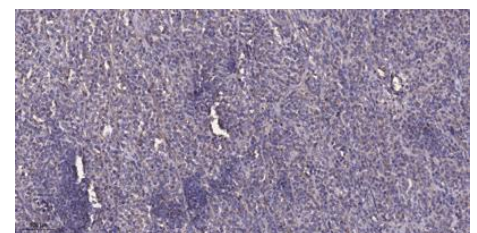
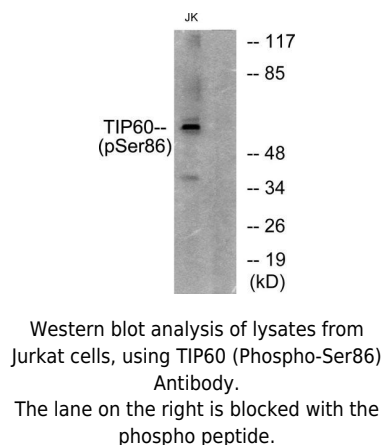
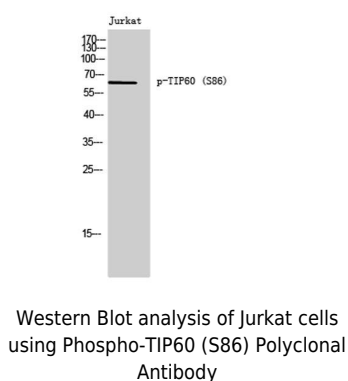
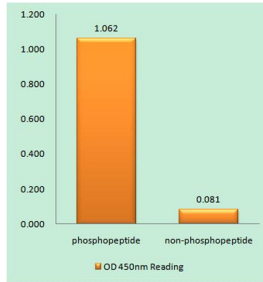


<b>Cat. No:</b>	ABP11224
<b>Conjugate:</b>	Unconjugated
<b>Size:</b>	100 ug
<b>Clone:</b>	POLY
<b>Concentration:</b>	1mg/ml
<b>Host:</b>	Rabbit
<b>Isotype:</b>	IgG
<b>Immunogen:</b>	The antiserum was produced against synthesized peptide derived from human TIP60 around the phosphorylation site of Ser86. AA range:52-101
<b>Reactivity:</b>	Human;Mouse
<b>Applications:</b>	Western Blot: 1:500-2000 Immunohistochemistry (paraffin-embedded tissues): 1:50-300 ELISA 2000-20000
<b>Molecular Weight:</b>	65kD
<b>Purification:</b>	The antibody was affinity-purified from rabbit antiserum by affinity-chromatography using epitope-specific immunogen.
<b>Synonyms:</b>	KAT5; HTATIP; TIP60; Histone acetyltransferase KAT5; 60 kDa Tat-interactive protein; Tip60; Histone acetyltransferase HTATIP; HIV-1 Tat interactive protein; Lysine acetyltransferase 5; cPLA(2)-interacting protein
<b>Background:</b>	The protein encoded by this gene belongs to the MYST family of histone acetyl transferases (HATs) and was originally isolated as an HIV-1 TAT-interactive protein. HATs play important roles in regulating chromatin remodeling, transcription and other nuclear processes by acetylating histone and nonhistone proteins. This protein is a histone acetylase that has a role in DNA repair and apoptosis and is thought to play an important role in signal transduction. Alternative splicing of this gene results in multiple transcript variants.
<b>Form:</b>	Liquid
<b>Buffer:</b>	Liquid in PBS containing 50% glycerol, 0.5% BSA and 0.02% sodium azide.
<b>Storage:</b>	Store at -20°C. Avoid repeated freeze-thaw cycles.



Immunohistochemical analysis of paraffin-embedded human Colon cancer.

- 1, Antibody was diluted at 1:200(4° overnight).
- 2, Tris-EDTA,pH9.0 was used for antigen retrieval.
- 3,Secondary antibody was diluted at 1:200(room temperature, 45min).



Enzyme-Linked Immunosorbent Assay  
(Phospho-ELISA) for Immunogen  
Phosphopeptide (Phospho-left) and Non-  
Phosphopeptide (Phospho-right), using  
TIP60 (Phospho-Ser86) Antibody