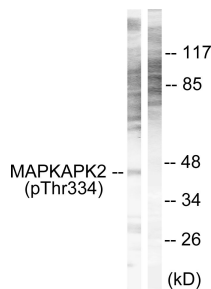
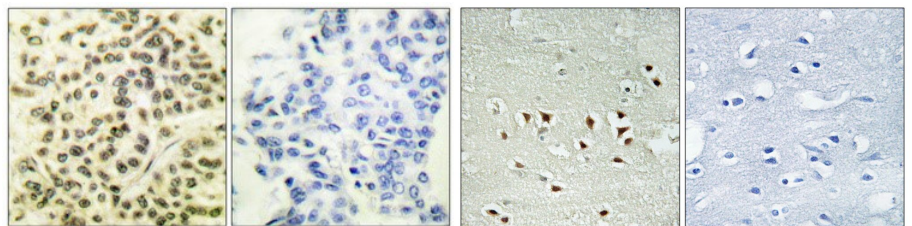


Cat. No:	ABP-0396
Conjugate:	Unconjugated
Size:	100 ug
Clone:	Poly
Concentration:	1mg/ml
Host:	Rb
Isotype:	IgG
Immunogen:	Synthesized peptide derived from human MAPKAPK-2 around the phosphorylation site of T334
Reactivity:	Hu, Ms, Rt
Applications:	Western Blot: 1:500-1:2000 Immunohistochemistry: 1:100-1:300 ELISA: 1:20000
Purification:	The antibody was affinity-purified from rabbit antiserum by affinity-chromatography using a epitope-specific immunogen.
Background:	Phospho-MAPKAPK-2 (T334) polyclonal antibody detects endogenous levels of MAPKAPK-2 protein only when phosphorylated at T334.
Form:	liquid
Buffer:	Liquid in PBS containing 50% glycerol, 0.5% BSA and 0.02% sodium azide.
Storage:	Store at -20°C, and avoid repeat freeze-thaw cycles.



Western blot analysis of lysates from NIH/3T3 cells, using MAPKAPK2 (Phospho-Thr334) Antibody. The lane on the right is blocked with the phospho peptide



Immunohistochemical analysis of paraffin-embedded Human breast cancer. Antibody was diluted at 1:100(4° overnight). High-pressure and temperature Tris-EDTA,pH8.0 was used for antigen retrieval. Negative contrl (right) obtained from antibody was pre-absorbed by immunogen peptide.

Immunohistochemistry analysis of paraffin-embedded human brain, using MAPKAPK2 (Phospho-Thr334) Antibody. The picture on the right is blocked with the phospho peptide.

**For Research use only
IMMUNOLOGICAL SCIENCES**