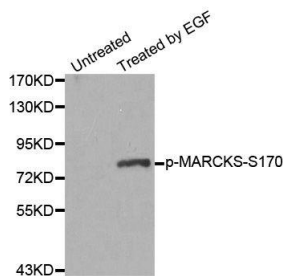
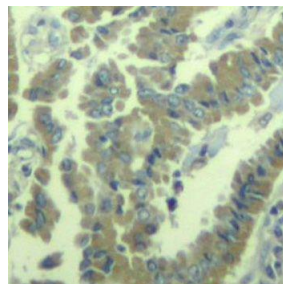


Cat. No:	ABP-0404
Conjugate:	Unconjugated
Size:	100 ug
Clone:	Poly
Concentration:	1mg/ml
Host:	Rb
Isotype:	IgG
Immunogen:	A phospho specific peptide corresponding to residues surrounding S170 of human MARCKS.
Reactivity:	Hu
Applications:	Western Blot: 1:1000 Immunohisotchemistry: 1:50-1:100
Molecular Weight:	80kDa
Purification:	Affinity purification
Synonyms:	80K-L;MACS;PKCSL;PRKCSL
Background:	<p>The protein encoded by this gene is a substrate for protein kinase C. It is localized to the plasma membrane and is an actin filament crosslinking protein. Phosphorylation by protein kinase C or binding to calcium-calmodulin inhibits its association with actin and with the plasma membrane, leading to its presence in the cytoplasm. The protein is thought to be involved in cell motility, phagocytosis, membrane trafficking and mitogenesis.</p>
Form:	liquid
Buffer:	Buffer: PBS with 0.02% sodium azide, 50% glycerol, pH7.3.
Storage:	Store at -20°C, and avoid repeat freeze-thaw cycles.



Western blot - phospho-MARCKSS170 antibody



Immunohistochemistry - Phospho-MARCKS-S170 antibody.

**For Research use only
IMMUNOLOGICAL SCIENCES**