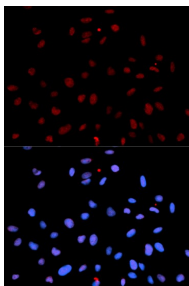


Cat. No:	ABP-0079
Conjugate:	Unconjugated
Size:	100 ug
Clone:	Poly
Concentration:	1mg/ml
Host:	Rb
Isotype:	IgG
Immunogen:	A phospho specific peptide corresponding to residues surrounding Y1235 of human MET.
Reactivity:	Hu, Ms, Rt
Applications:	Western Blot: 1:100 Immunofluorescence: 1:20-1:100
Molecular Weight:	155kDa
Purification:	Affinity purification
Background:	The proto-oncogene MET product is the hepatocyte growth factor receptor and encodes tyrosine-kinase activity. The primary single chain precursor protein is posttranslationally cleaved to produce the alpha and beta subunits, which are disulfide linked to form the mature receptor. Various mutations in the MET gene are associated with papillary renal carcinoma. Two transcript variants encoding different isoforms have been found for this gene.
Form:	liquid
Buffer:	: PBS with 0.02% sodium azide, 50% glycerol, pH7.3.
Storage:	Store at -20°C. Avoid freeze / thaw cycles.



Immunofluorescence analysis of U2OS cell using Phospho-MET-Y1235 antibody.
Blue: DAPI for nuclear staining.

**For Research use only
IMMUNOLOGICAL SCIENCES**