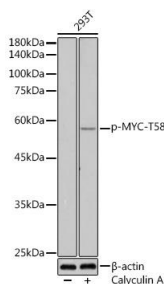


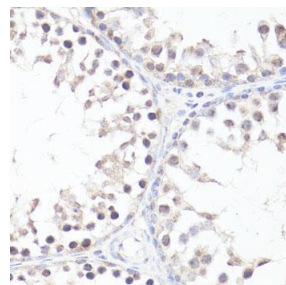
Cat. No:	ABP-0080
Conjugate:	Unconjugated
Size:	100 ug
Clone:	Poly
Concentration:	1mg/ml
Host:	Rb
Isotype:	IgG
Immunogen:	A phospho specific peptide corresponding to residues surrounding T58 of human MYC.
Reactivity:	Hu
Applications:	Western Blot: 1:500 - 1:2000 Immunohistochemistry: 1:50 - 1:200 Immunofluorescence: 1:50 - 1:100
Molecular Weight:	62KDa
Purification:	Affinity purification
Synonyms:	MRTL;MYCC;bHLHe39;c-Myc;MYC

Background: The protein encoded by this gene is a multifunctional, nuclear phosphoprotein that plays a role in cell cycle progression, apoptosis and cellular transformation. It functions as a transcription factor that regulates transcription of specific target genes. Mutations, overexpression, rearrangement and translocation of this gene have been associated with a variety of hematopoietic tumors, leukemias and lymphomas, including Burkitt lymphoma. There is evidence to show that alternative translation initiations from an upstream, in-frame non-AUG (CUG) and a downstream AUG start site result in the production of two isoforms with distinct N-termini. The synthesis of non-AUG initiated protein is suppressed in Burkitt's lymphomas, suggesting its importance in the normal function of this gene.

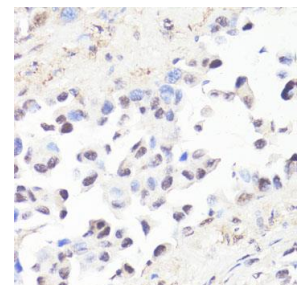
Form:	liquid
Buffer:	PBS with 0.02% sodium azide,50% glycerol,pH7.3.
Storage:	Store at -20°C. Avoid freeze / thaw cycles.



Western blot analysis of extracts of 293T cells, using Phospho-MYC-T58 antibody at 1:500 dilution. 293T cells were treated by Calyculin A (100 nM) at 37°C for 30 minutes after serum-starvation overnight. Secondary antibody: HRP Goat Anti-Rabbit IgG (H+L) at 1:10000

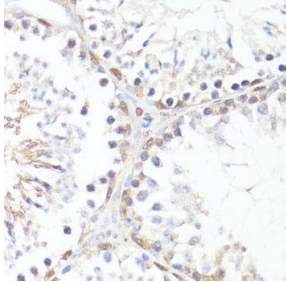


Immunohistochemistry of paraffin-embedded rat testis using P-MYC-T58 antibody at dilution of 1:100 (40x lens).

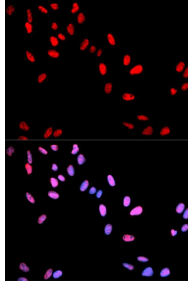


Immunohistochemistry of paraffin-embedded human lung cancer using PMYC-T58 antibody at dilution of 1:100 (40x lens).

dilution. Lysates/proteins: 25ug per lane.
Blocking buffer: 3% nonfat dry milk in
TBST. Detection: ECL Enhanced Kit.
Exposure time: 180s



Immunohistochemistry of
paraffinembedded mouse testis using P-
MYC-T58 antibody at dilution of 1:100
(40x lens).



Immunofluorescence analysis of U2OS
cells using Phospho-MYC-T58 antibody.
Blue: DAPI for nuclear staining.