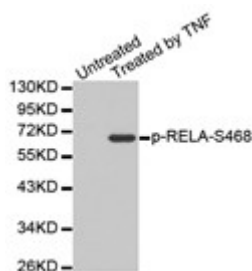


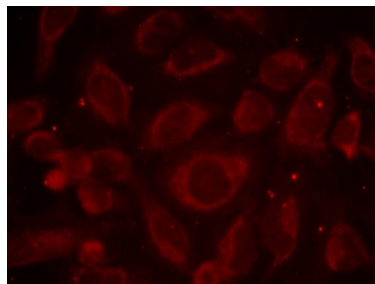
Cat. No:	ABP-0446
Conjugate:	Unconjugated
Size:	100 ug
Clone:	Poly
Concentration:	1mg/ml
Host:	Rb
Isotype:	IgG
Immunogen:	A phospho specific peptide corresponding to residues surrounding S468 of human NFκB-P65
Reactivity:	Hu, Ms, Rt
Applications:	Western Blotting 1:1000 Immunofluorescence 1:100 - 1:200
Molecular Weight:	"65 kDa "
Purification:	Affinity purification
Synonyms:	p65; NFκB3; RELA

Background: NF-kappa-B is a ubiquitous transcription factor involved in several biological processes. It is held in the cytoplasm in an inactive state by specific inhibitors. Upon degradation of the inhibitor, NF-kappa-B moves to the nucleus and activates transcription of specific genes. NF-kappa-B is composed of NFκB1 or NFκB2 bound to either REL, NFκB-P65, or RELB. The most abundant form of NF-kappa-B is NFκB1 complexed with the product of this gene, NFκB-P65. Four transcript variants encoding different isoforms have been found for this gene.

Form:	liquid
Buffer:	PBS with 0.02% sodium azide, 50% glycerol, pH7.3, BSA.
Storage:	Store at -20° C. Avoid freeze / thaw cycles.



Western blot analysis of extracts from HeLa cells, using Phospho-NFκB-p65-S468 antibody



Immunofluorescence staining of methanol-fixed HeLa cells, using Phospho-NFκB-p65-S468 antibody.

**For Research use only
IMMUNOLOGICAL SCIENCES**