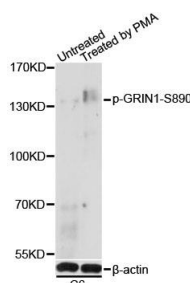


Cat. No:	ABP-0826
Conjugate:	Unconjugated
Size:	100 ug
Clone:	Poly
Concentration:	1mg/ml
Host:	Rb
Isotype:	IgG
Immunogen:	A phospho specific peptide corresponding to residues surrounding S890 of human GRIN1.
Reactivity:	Hu, Rt
Applications:	WB 1.1000
Molecular Weight:	Observed MW: 140kDa Calculated MW: 99kDa/101kDa/103kDa/105kDa/106kDa/107kDa
Purification:	Affinity purification
Synonyms:	GluN1,MRD8,NMD-R1,NMDA1,NMDAR1,NR1
Background:	The protein encoded by this gene is a critical subunit of N-methyl-D-aspartate receptors, members of the glutamate receptor channel superfamily which are heteromeric protein complexes with multiple subunits arranged to form a ligandgated ion channel. These subunits play a key role in the plasticity of synapses, which is believed to underlie memory and learning. Cell-specific factors are thought to control expression of different isoforms, possibly contributing to the functional diversity of the subunits. Alternatively spliced transcript variants have been described.
Form:	liquid
Buffer:	PBS with 0.02% sodium azide, 50% glycerol, pH7.3.
Storage:	Store at -20°C. Avoid freeze / thaw cycles.



Western blot analysis of extracts of C6 cells, using Phospho-GRIN1-S890 antibody at 1:1000 dilution. C6 cells were treated by PMA/TPA (200nM) for 30 minutes after serumstarvation overnight. Secondary antibody: HRP Goat Anti-Rabbit IgG (H+L) at 1:10000 dilution. Lysates/proteins: 25ug per lane. Blocking buffer: 3% BSA. Detection: ECL

Basic Kit. Exposure time: 90s.

**For Research use only
IMMUNOLOGICAL SCIENCES**