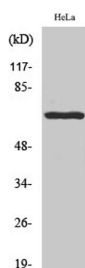
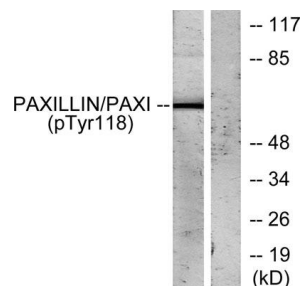


Cat. No:	ABP-0156
Conjugate:	Unconjugated
Size:	100 ug
Clone:	Poly
Concentration:	1mg/ml
Host:	Rabbit
Isotype:	IgG
Immunogen:	The antiserum was produced against synthesized peptide derived from human Paxillin around the phosphorylation site of Tyr118. AA range:85-134
Reactivity:	Human;Mouse;Rat
Applications:	Western Blot: 1/500 - 1/2000
Molecular Weight:	64kD
Purification:	The antibody was affinity-purified from rabbit antiserum by affinity-chromatography using epitope-specific immunogen.
Synonyms:	PXN; Paxillin
Background:	This gene encodes a cytoskeletal protein involved in actin-membrane attachment at sites of cell adhesion to the extracellular matrix (focal adhesion). Alternatively spliced transcript variants encoding different isoforms have been described for this gene. These isoforms exhibit different expression pattern, and have different biochemical, as well as physiological properties.
Form:	liquid
Buffer:	Liquid in PBS containing 50% glycerol, 0.5% BSA and 0.02% sodium azide.
Storage:	Store at -20°C. Avoid repeated freeze-thaw cycles.



Western Blot analysis of various cells using Phospho-Paxillin (Y118) Polyclonal Antibody



Western blot analysis of lysates from HeLa cells treated with EGF, using Paxillin (Phospho-Tyr118) Antibody. The lane on the right is blocked with the phospho peptide.

**For Research use only
IMMUNOLOGICAL SCIENCES**