



Cat. No: ABP10906
Conjugate: Unconjugated
Size: 100 ug
Clone: POLY
Concentration: 1mg/ml
Host: Rabbit
Isotype: IgG

Immunogen: The antiserum was produced against synthesized peptide derived from human PI3-kinase p85-alpha around the phosphorylation site of Tyr607. AA range:573-622

Reactivity: Hu, Ms, Rt, Chicken

Applications: Western Blot: 1/500 - 1/2000
 Immunofluorescence:: 1:50-200
 Immunohistochemistry: 1/100 - 1/300.

Molecular Weight: 80kDa

Purification: The antibody was affinity-purified from rabbit antiserum by affinity-chromatography using epitope-specific immunogen.

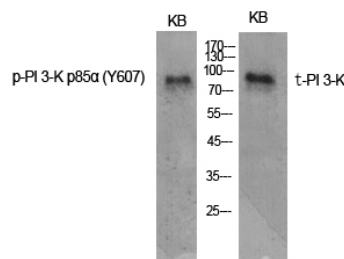
Synonyms: PIK3R1; GRB1; Phosphatidylinositol 3-kinase regulatory subunit alpha; PI3-kinase regulatory subunit alpha; PI3K regulatory subunit alpha; PtdIns-3-kinase regulatory subunit alpha; Phosphatidylinositol 3-kinase 85 kDa regulatory subunit alpha

Background: Phosphatidylinositol 3-kinase phosphorylates the inositol ring of phosphatidylinositol at the 3-prime position. The enzyme comprises a 110 kD catalytic subunit and a regulatory subunit of either 85, 55, or 50 kD. This gene encodes the 85 kD regulatory subunit. Phosphatidylinositol 3-kinase plays an important role in the metabolic actions of insulin, and a mutation in this gene has been associated with insulin resistance. Alternative splicing of this gene results in four transcript variants encoding different isoforms.

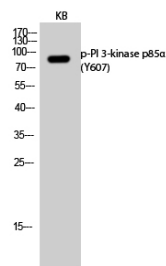
Form: liquid

Buffer: Liquid in PBS containing 50% glycerol, 0.5% BSA and 0.02% sodium azide.

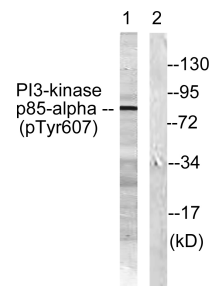
Storage: Store at -20°C. Avoid freeze / thaw cycles



Western Blot analysis of various cells using Phospho-PI 3-kinase p85 α (Tyr607) Polyclonal Antibody diluted at 1:1000

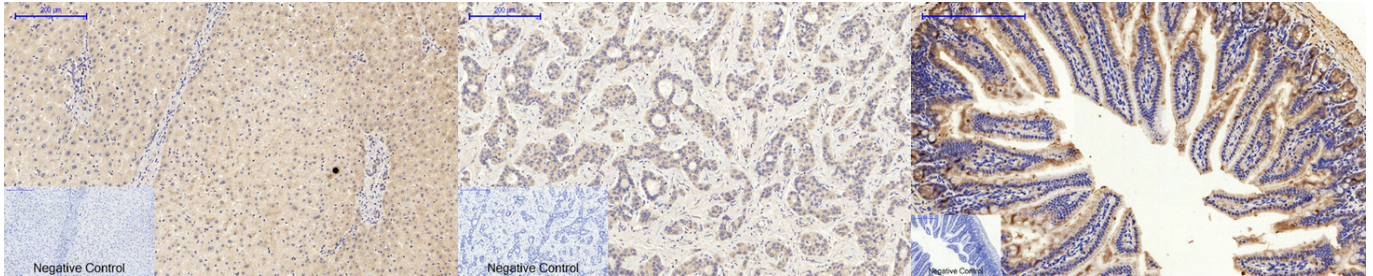


Western Blot analysis of KB cells using Phospho-PI 3-kinase p85 α (Tyr607) Polyclonal Antibody diluted at 1:1000



Western blot analysis of lysates from rat kidney, using PI3-kinase p85-alpha (Phospho-Tyr607) Antibody. The lane on

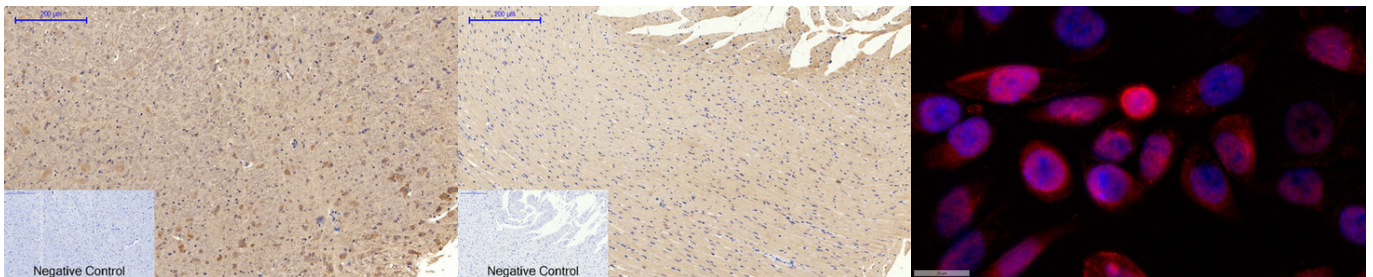
the right is blocked with the phospho peptide.



Immunohistochemical analysis of paraffin-embedded Human-liver tissue. 1,PI 3-kinase p85 α (phospho Tyr607) Polyclonal Antibody was diluted at 1:200(4°C,overnight). 2, Sodium citrate pH 6.0 was used for antibody retrieval(>98°C,20min). 3,Secondary antibody was diluted at 1:200(room temperature, 30min). Negative control was used by secondary antibody only.

Immunohistochemical analysis of paraffin-embedded Human-liver-cancer tissue. 1,PI 3-kinase p85 α (phospho Tyr607) Polyclonal Antibody was diluted at 1:200(4°C,overnight). 2, Sodium citrate pH 6.0 was used for antibody retrieval(>98°C,20min). 3,Secondary antibody was diluted at 1:200(room temperature, 30min). Negative control was used by secondary antibody only.

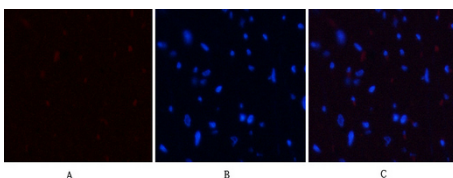
Immunohistochemical analysis of paraffin-embedded Mouse-colon tissue. 1,PI 3-kinase p85 α (phospho Tyr607) Polyclonal Antibody was diluted at 1:200(4°C,overnight). 2, Sodium citrate pH 6.0 was used for antibody retrieval(>98°C,20min). 3,Secondary antibody was diluted at 1:200(room temperature, 30min). Negative control was used by secondary antibody only.



Immunohistochemical analysis of paraffin-embedded Mouse-brain tissue. 1,PI 3-kinase p85 α (phospho Tyr607) Polyclonal Antibody was diluted at 1:200(4°C,overnight). 2, Sodium citrate pH 6.0 was used for antibody retrieval(>98°C,20min). 3,Secondary antibody was diluted at 1:200(room temperature, 30min). Negative control was used by secondary antibody only.

Immunohistochemical analysis of paraffin-embedded Rat-heart tissue. 1,PI 3-kinase p85 α (phospho Tyr607) Polyclonal Antibody was diluted at 1:200(4°C,overnight). 2, Sodium citrate pH 6.0 was used for antibody retrieval(>98°C,20min). 3,Secondary antibody was diluted at 1:200(room temperature, 30min). Negative control was used by secondary antibody only.

Immunofluorescence analysis of SiHa cell. 1,primary Antibody was diluted at 1:100(4°C overnight). 2, Goat Anti Rabbit IgG (H&L) - AFluor 594 Secondary antibody was diluted at 1:500(room temperature, 50min).



Immunofluorescence analysis of rat-heart tissue. 1,PI 3-kinase p85 α (phospho Tyr607) Polyclonal Antibody(red) was diluted at 1:200(4°C,overnight). 2, Cy3 labeled Secondary antibody was diluted at 1:300(room temperature, 50min).3, Picture B: DAPI(blue) 10min. Picture A:Target. Picture B: DAPI. Picture C: merge of A+B

**For Research use only
IMMUNOLOGICAL SCIENCES**