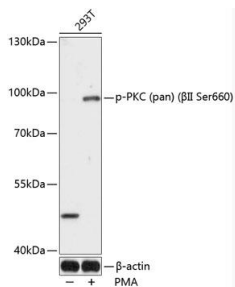


Cat. No:	ABP-0495
Conjugate:	Unconjugated
Size:	100 ug
Clone:	Poly
Concentration:	1mg/ml
Host:	Rb
Isotype:	IgG
Immunogen:	A phospho specific peptide corresponding to residues surrounding Ser660 of human PKC (pan) β II
Reactivity:	Hu, Ms, Rt
Applications:	WB 1:1000
Molecular Weight:	95kDa
Purification:	Affinity purification
Form:	liquid
Buffer:	PBS with 0.02% sodium azide, 50% glycerol, pH7.3
Storage:	Store at -20°C. Avoid freeze / thaw cycles.



Western blot analysis of extracts of 293T cells, using Phospho-PKC (pan) (β II Ser660) antibody at 1:1000 dilution. 293T cells were treated by PMA/TPA (200nM) for 30 minutes after serum-starvation overnight. Secondary antibody: HRP Goat Anti-Rabbit IgG (H+L) at 1:10000 dilution. Lysates/proteins: 25ug per lane. Blocking buffer: 3% BSA. Detection: ECLWest Pico Plus. Exposure time: 90s.

**For Research use only
IMMUNOLOGICAL SCIENCES**