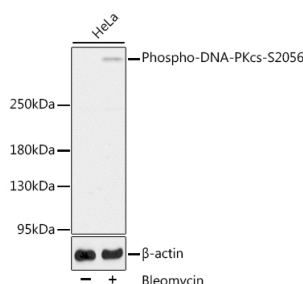




<b>Cat. No:</b>	ABP10327
<b>Conjugate:</b>	Unconjugated
<b>Size:</b>	100 ug
<b>Clone:</b>	Poly
<b>Concentration:</b>	1mg/ml
<b>Host:</b>	Rabbit
<b>Isotype:</b>	IgG
<b>Immunogen:</b>	A synthetic phosphorylated peptide around S2056 of human DNA-PKcs.
<b>Reactivity:</b>	Human
<b>Applications:</b>	Western Blot: 1:500 - 1:2000 Immunofluorescence: 1:50 - 1:200 Immunocytochemistry: 1:50 - 1:200
<b>Molecular Weight:</b>	469kDa
<b>Purification:</b>	Affinity purification
<b>Synonyms:</b>	HYRC; p350; DNAPK; DNPk1; HYRC1; IMD26; XRCC7; DNAPKc; DNA-PKC; DNA-PKcs
<b>Background:</b>	This gene encodes the catalytic subunit of the DNA-dependent protein kinase (DNA-PK). It functions with the Ku70/Ku80 heterodimer protein in DNA double strand break repair and recombination. The protein encoded is a member of the PI3/PI4-kinase family.
<b>Form:</b>	liquid
<b>Buffer:</b>	PBS with 0.01% thimerosal,50% glycerol,pH7.3.
<b>Storage:</b>	Store at -20°C. Avoid freeze / thaw cycles.

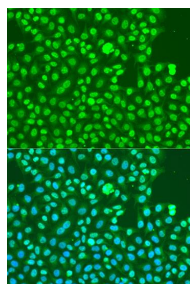


Western blot analysis of extracts of HeLa cells, using Phospho-DNA-PKcs-S2056 antibody.

Secondary antibody: HRP Goat Anti-Rabbit IgG (H+L) at 1:10000 dilution.

Lysates/proteins: 25µg per lane.

Blocking buffer: 3% BSA.



Immunofluorescence analysis of U2OS cells using Phospho-DNA-PKcs-S2056 antibody at dilution of 1:100.

Blue: DAPI for nuclear staining.

**References:**

References for Phospho-DNA-PKcs-S2056 Rabbit pAb

Product: Phospho-DNA-PKcs-S2056 Rabbit pAb

Journal: mBio

Application: WB

IF: 0

Species: Homo sapiens

PMID: 36719192

Title: Adeno-Associated Virus Monoinfection Induces a DNA Damage Response and DNA Repair That Contributes to Viral DNA Replication

**For Research use only  
IMMUNOLOGICAL SCIENCES**