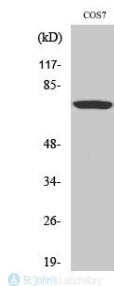


| | |
|--------------------------|---|
| Cat. No: | ABP-0443 |
| Conjugate: | Unconjugated |
| Size: | 100 ug |
| Clone: | Poly |
| Concentration: | 1mg/ml |
| Host: | Rb |
| Isotype: | IgG |
| Immunogen: | Synthesized peptide derived from human Raf-1 around the phosphorylation site of S259. |
| Reactivity: | Hu, Ms, Rt, Monkey |
| Applications: | Western Blot: 1:1000-1:2000 Immunohistochemistry(paraffin-embedded tissues): 1:100-1:300 ELISA: 1:20000 |
| Molecular Weight: | 73 kDa |
| Purification: | The antibody was affinity-purified from rabbit antiserum by affinitychromatography using epitope-specific immunogen. |
| Background: | Raf-1 is a protein encoded by the RAF1 gene which is approximately 73 kDa. Raf-1 is localised to the cytoplasm, cell membrane, mitochondrion and nucleus. It is involved in RET signalling, the IL-2 pathway, regulation of lipid metabolism and insulin signalling-generic cascades. When it is activated, the cellular RAF1 protein can phosphorylate to activate the dual specificity protein kinases MEK1 and MEK2, which in turn phosphorylates to activate the serine/threonine specific protein kinases, ERK1 and ERK2. It plays an important role in the control of gene expression involved in the cell division cycle, apoptosis, cell differentiation and cell migration. Raf-1 is expressed in skeletal muscle With isoform 1 is more abundant than isoform 2. Mutations in the RAF1 gene result in Noonan syndrome, Leopard syndrome and cardiomyopathy. Phospho-Raf-1 (S259) Polyclonal Antibody detects endogenous levels of Raf-1 protein only when phosphorylated at S259. |
| Form: | liquid |
| Buffer: | Liquid in PBS containing 50% glycerol, 0.5% BSA and 0.02% sodium azide. |
| Storage: | Store at -20°C and avoid repeat freeze-thaw cycles. |



Western Blot (WB) analysis of specific cells using Phospho-Raf-1 (S259) Polyclonal Antibody.

**For Research use only
IMMUNOLOGICAL SCIENCES**