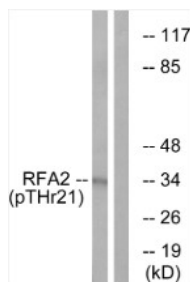
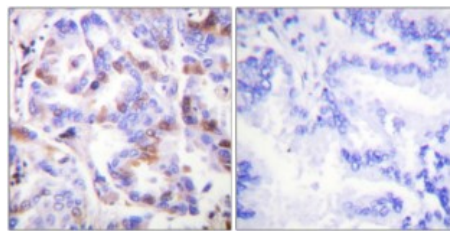


Cat. No:	ABP11016
Conjugate:	Unconjugated
Size:	100 ug
Clone:	Poly
Concentration:	1mg/ml
Host:	Rb
Isotype:	IgG
Immunogen:	Synthesized peptide derived from human RPA32 around the phosphorylation site of T21.
Reactivity:	Hu, Ms
Applications:	Western Blot: 1:500-1:2000 Immunohistochemistry: 1:100-1:300 ELISA: 1:10000
Molecular Weight:	35kDa
Purification:	The antibody was affinity-purified from rabbit antiserum by affinity chromatography using epitope-specific immunogen.
Synonyms:	Replication protein A 32 kDa subunit RP-A p32 Replication factor A protein 2 RF-A protein 2 Replication protein A 34 kDa subunit RP-A p34.
Background:	Phospho-RPA32 (T21) Polyclonal Antibody detects endogenous levels of RPA32 protein only when phosphorylated at T21.
Form:	liquid
Buffer:	Liquid in PBS containing 50% glycerol, 0.5% BSA and 0.02% sodium azide
Storage:	Store at -20°C, and avoid repeat freeze-thaw cycles.



Western Blot Analysis using Phospho RPA32 (T21) antibody



Immunohistochemical Analysis using Phospho RPA32 (T21) antibody

**For Research use only
IMMUNOLOGICAL SCIENCES**