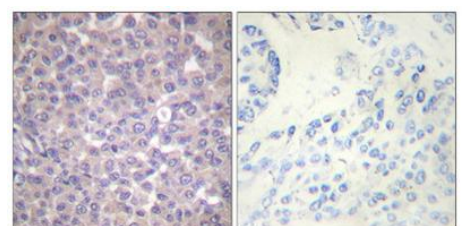
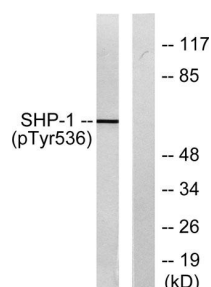
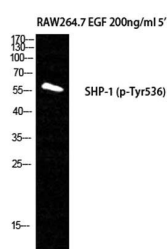


Cat. No:	ABP11214
Conjugate:	Unconjugated
Size:	100 ug
Clone:	POLY
Concentration:	1mg/ml
Host:	Rabbit
Isotype:	IgG
Immunogen:	The antiserum was produced against synthesized peptide derived from human SHP-1 around the phosphorylation site of Tyr536. AA range:502-551
Reactivity:	Human, Mouse, Rat
Applications:	Western Blot: 1/500 - 1/2000. Immunohistochemistry: 1/100 - 1/300 Immunofluorescence: 1:50-1:200 ELISA:1/10000.
Molecular Weight:	67kD
Purification:	The antibody was affinity-purified from rabbit antiserum by affinity-chromatography using epitope-specific immunogen.
Synonyms:	PTPN6; HCP; PTP1C; Tyrosine-protein phosphatase non-receptor type 6; Hematopoietic cell protein-tyrosine phosphatase; Protein-tyrosinephosphatase 1C; PTP-1C; Protein-tyrosine phosphatase SHP-1; SH-PTP1
Background:	The protein encoded by this gene is a member of the protein tyrosine phosphatase (PTP) family. PTPs are known to be signaling molecules that regulate a variety of cellular processes including cell growth, differentiation, mitotic cycle, and oncogenic transformation. N-terminal part of this PTP contains two tandem Src homolog (SH2) domains, which act as protein phospho-tyrosine binding domains, and mediate the interaction of this PTP with its substrates. This PTP is expressed primarily in hematopoietic cells, and functions as an important regulator of multiple signaling pathways in hematopoietic cells. This PTP has been shown to interact with, and dephosphorylate a wide spectrum of phospho-proteins involved in hematopoietic cell signaling. Multiple alternatively spliced variants of this gene, which encode distinct isoforms, have been reported.
Form:	Liquid
Buffer:	Liquid in PBS containing 50% glycerol, 0.5% BSA and 0.02% sodium azide.
Storage:	Store at -20°C. Avoid repeated freeze-thaw cycles.

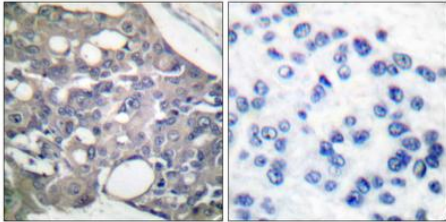


Immunohistochemical analysis of

Western Blot analysis of RAW264.7+EGF cells using Phospho-SH-PTP1 (Y536) Polyclonal Antibody

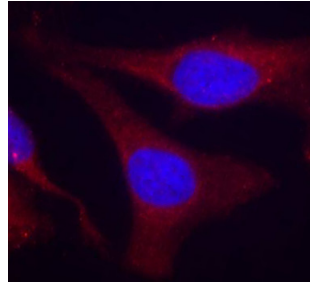
Western blot analysis of lysates from RAW264.7 cells treated with EGF 200ng/ml 5', using SHP-1 (Phospho-Tyr536) Antibody. The lane on the right is blocked with the phospho peptide.

paraffin-embedded Human breast cancer. Antibody was diluted at 1:100(4° overnight). High-pressure and temperature Tris-EDTA,pH8.0 was used for antigen retrieval. Negative control (right) obtained from antibody was pre-absorbed by immunogen peptide.



Immunohistochemistry analysis of paraffin-embedded human breast carcinoma, using SHP-1 (Phospho-Tyr536)

Antibody. The picture on the right is blocked with the phospho peptide.



Immunofluorescence - Phospho-SHP1-Tyr536 Rabbit pAb