

**Cat. No:** ABP11215  
**Conjugate:** Unconjugated  
**Size:** 100 ug  
**Clone:** POLY  
**Concentration:** 1mg/ml  
**Host:** Rabbit  
**Isotype:** IgG

**Immunogen:** The antiserum was produced against synthesized peptide derived from human SHP-2. The antibody was affinity-purified from rabbit antiserum by affinity-chromatography using epitope-specific immunogen.

**Reactivity:** Human, Mouse, Rat

**Applications:** Western Blot: 1/500 - 1/2000.  
 Immunohistochemistry: 1/100 - 1/300  
 Immunofluorescence: 1:50-1:200  
 ELISA: 1/10000.

**Molecular Weight:** 70kD

**Purification:** The antibody was affinity-purified from rabbit antiserum by affinity-chromatography using epitope-specific immunogen.

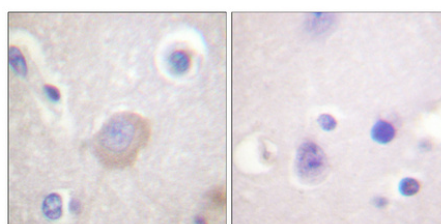
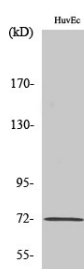
**Synonyms:** PTPN11; PTP2C; SHPTP2; Tyrosine-protein phosphatase non-receptor type 11; Protein-tyrosine phosphatase 1D; PTP-1D; Protein-tyrosine phosphatase 2C; PTP-2C; SH-PTP2; SHP-2; Shp2; SH-PTP3

**Background:** The protein encoded by this gene is a member of the protein tyrosine phosphatase (PTP) family. PTPs are known to be signaling molecules that regulate a variety of cellular processes including cell growth, differentiation, mitotic cycle, and oncogenic transformation. This PTP contains two tandem Src homology-2 domains, which function as phospho-tyrosine binding domains and mediate the interaction of this PTP with its substrates. This PTP is widely expressed in most tissues and plays a regulatory role in various cell signaling events that are important for a diversity of cell functions, such as mitogenic activation, metabolic control, transcription regulation, and cell migration. Mutations in this gene are a cause of Noonan syndrome as well as acute myeloid leukemia

**Form:** Liquid

**Buffer:** Liquid in PBS containing 50% glycerol, 0.5% BSA and 0.02% sodium azide.

**Storage:** Store at -20°C. Avoid repeated freeze-thaw cycles.



Immunohistochemical analysis of

Western Blot analysis of various cells  
using Phospho-SH-PTP2 (Y542)  
Polyclonal Antibody diluted at 1:1000

paraffin-embedded Human brain.  
Antibody was diluted at 1:100(4°  
overnight). High-pressure and  
temperature Tris-EDTA, pH8.0 was used  
for antigen retrieval. Negative control  
(right) obtained from antibody was pre-  
absorbed by immunogen peptide

**For Research use only  
IMMUNOLOGICAL SCIENCES**