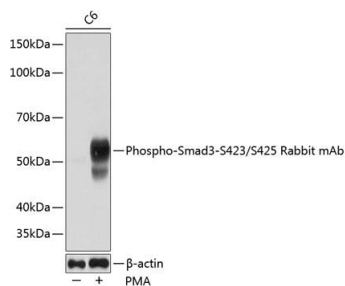


Cat. No:	ABP-0630
Conjugate:	Unconjugated
Size:	100 ug
Clone:	Poly
Concentration:	1mg/ml
Host:	Rb
Isotype:	IgG
Immunogen:	A phospho specific peptide corresponding to residues surrounding S423/S425 of human Smad3
Reactivity:	Hu, Ms
Applications:	Western Blot: 1:1000 Immunohistochemistry: 1:50-1:200
Molecular Weight:	Calculated MW: 25kDa/35kDa/43kDa/48kDa Observed MW: 48kDa
Purification:	Affinity purification
Synonyms:	HSPC193;HsT17436;JV15-2;LDS1C;LDS3;MADH3

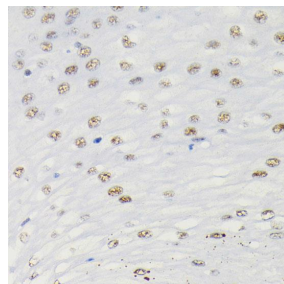
Background:

The protein encoded by this gene belongs to the SMAD, a family of proteins similar to the gene products of the Drosophila gene 'mothers against decapentaplegic' (Mad) and the C. elegans gene Sma. SMAD proteins are signal transducers and transcriptional modulators that mediate multiple signaling pathways. This protein functions as a transcriptional modulator activated by transforming growth factor beta and is thought to play a role in the regulation of carcinogenesis.

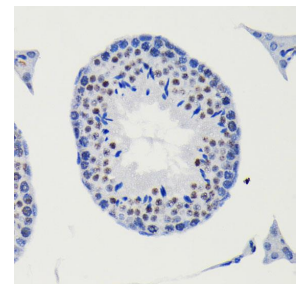
Form:	liquid
Buffer:	PBS with 0.02% sodium azide, 50% glycerol, pH7.3.
Storage:	Store at -20°C. Avoid freeze / thaw cycles.



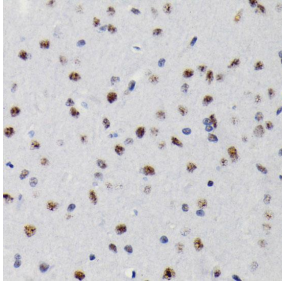
Western blot analysis of extracts of C6 cells, using Phospho-Smad3- S423/S425 Rabbit at 1:1000 dilution. C6 cells were treated by PMA/TPA (200 nM) at 37°C for 10 minutes. Secondary antibody: HRP Goat Anti- Rabbit IgG (H+L) at 1:10000 dilution. Lysates/proteins: 25ug per lane. Blocking buffer: 3% nonfat dry milk in TBST. Detection: ECL West Pico Plus. Exposure time: 60s.



Immunohistochemistry of paraffin embedded human esophageal using Phospho-Smad3-S423/S425 antibody at dilution of 1:100 (40x lens).



Immunohistochemistry of paraffin embedded mouse testis using Phospho-Smad3-S423/S425 antibody at dilution of 1:100 (40x lens).



Immunohistochemistry of paraffin embedded rat brain using Phospho-Smad3-S423/S425 antibody at dilution of 1:100 (40x lens).

**For Research use only
IMMUNOLOGICAL SCIENCES**